

Table of contents

Irradiators	4
Recirculators	6
Cameras	8
Physiotherapy	10
Obstetrics and Gynecology	16
Neonatology	18
Armchairs	20
Chairst	26
Couches / Banquettes / Rollers	30
Massage tables	34
Beds and mattresses	36
Carts	40
Tables	44
Cabinets	46
Carriers, stands	52
Stadiometer, panel screens	54
Tripods	56
Bags	58
Laboratory	62
Roentgenology	64
Folding furniture	66
Surgical tables	68
Stainless steel furniture	70
Laboratory tables	72
Equipment for the immobilization	74
Ophthalmology	76
Others	77
Air sterilizers	78
Steam Sterilizer	79

IRRADIATORS



Bactericidal irradiator OBN-75m

Bactericidal irradiator for wall and ceiling OBN-75m is the optimal solution for the disinfection of the premises of average volume. Ultraviolet radiation of the irradiator is an indispensable tool for disinfection in dental offices, child care centers, residential areas, areas of food industry and others. The fixing of the irradiator is carried out horizontally on the wall or ceiling. Additionally, the irradiator can be fitted with a protective screen which allows people and animals to stay in the premises, and a wire with a fork.

Power consumption, VA, - no more than 100
Overall dimensions, mm: (l*d*h) - 922*53*76

Bactericidal irradiator OBN-35m

Compact bactericidal irradiator for wall and ceiling OBN-35m is intended for use in small premises of medical institutions, dentistry, as well as in children and living rooms. The small size of the irradiator allows installation in small corridors and preoperative. Wall and ceiling mount is allowed. Upon customer request the irradiator can be equipped with a protective screen against radiation and a wire with a fork

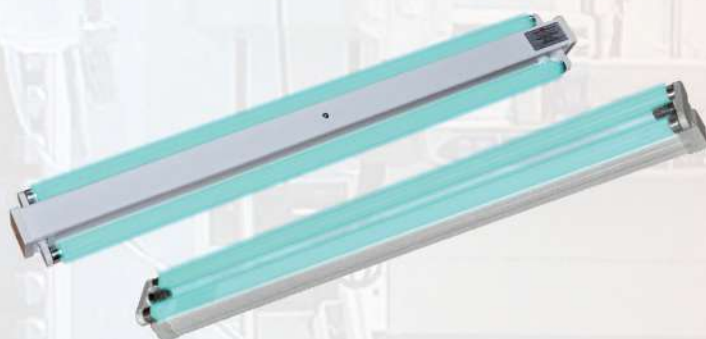
Power consumption, VA, - no more than 50
Overall dimensions, mm: (l*d*h) - 478*53*76



Bactericidal irradiator OBN-150mp

Bactericidal irradiator for wall and ceiling OBN-150mp for two open 30W lamps is used for fast disinfection of premises in various medical institutions. It is the best solution to provide the maintenance of clean air in medical offices, surgical rooms, sterilizing and bandaging rooms. The irradiator is mounted horizontally on the wall or ceiling. Additionally, the irradiator can be fitted with a protective screen and a wire with a fork.

Power consumption, VA, - no more than 200
Overall dimensions, mm: (l*d*h) - 956*115*55



Bactericidal irradiator OBN-150m

Due to its design, wall mounted bactericidal irradiator OBN-150m for two bactericidal 30W lamps allows to carry out decontamination of premises in the presence of people. The irradiator is mounted horizontally on the wall, with the upper lamp closed with the screen, and disinfection is carried out due to air convection. For rapid disinfection the bottom open lamp is used. Connection of each lamp is carried out separately. The switch is desirable to have in a separate room, and there is a need to report on the prohibition of finding staff in the room.

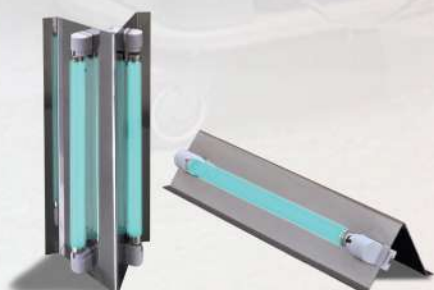
Power consumption, VA, - no more than 200
Overall dimensions, mm: (l*d*h) - 944*73*136



Bactericidal irradiator OBN-15m

Stylish design, simplicity of construction and maximum work efficiency make the household desktop irradiator OBN-15m an optimal solution for the decontamination of household premises. Depending on the volume of the room the irradiator is equipped with one or two lamps.

Power consumption, VA, - no more than 20
Overall dimensions, mm: (l*d*h) - 365*140*80



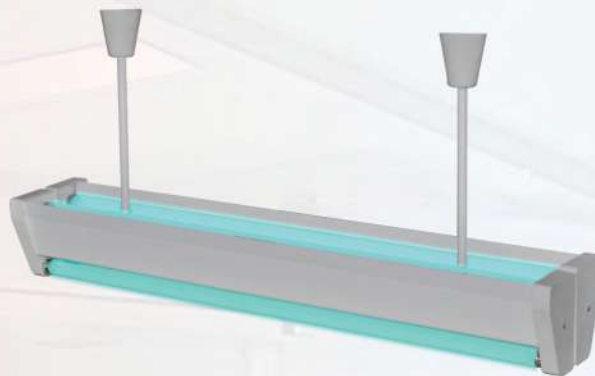
Bactericidal irradiator OBP-300m

Ceiling bactericidal irradiator OBP-300m is used for the disinfection of large premises when it is impossible to carry out wall placement.

Irradiator has four lamps, of which the top two are closed with a protective screen with separate switching that makes it possible to perform disinfection in the presence of people. For rapid disinfection two lower open lamps are used. It is widely used to clean the air inside the production halls, sports premises and incubators.

Power consumption, VA, - no more than 400

Overall dimensions, mm: (l*d*h) - 940*160*430



Bactericidal irradiator OBPe-225m

Removable bactericidal irradiator OBPe-225m is used for rapid disinfection of air and surfaces in the premises of large and medium volume. Due to its design and ease of movement, it is recommended to alternate disinfection of several rooms. Corpus of the irradiator is made of quality steel in powder painted. Irradiator is completed with three open bactericidal 30W lamps. For ease of movement and protection of lamps from the blow, metal handle is mounted on the rack.

Power consumption, VA, - no more than 300

Overall dimensions, mm: (l*d*h) - 360*360*1120



Bactericidal irradiator OBPe -450m

Removable bactericidal irradiator OBPe-450m for six open lamps is used for quick disinfection of air and surfaces of larger buildings, production halls, sports facilities and health care facilities. For ease of movement and protection of lamps from the blow, metal handle is mounted on the rack. Irradiator has no protruding sharp parts, which makes its operation safe

Power consumption, VA, - no more than 600

Overall dimensions, mm: (l*d*h) - 360*360*1120



RECIRCULATORS



Bactericidal recirculator Aereks-constant

Stylish design combined with effective air purification from viral bacteria makes desktop recirculator Aereks-constant indispensable for office and residential premises. Corpus of recirculator is made of high quality plastic and has a convenient control panel. In addition to the low-pressure lamps with UV spectrum wave 253,7nm, the protective filter is installed in recirculator for trapping suspended particles present in the air.

Power consumption, VA, - no more than 50
Overall dimensions, mm: (l*d*h) - 170*140*425



Bactericidal recirculator Aereks-standart 15

The compact size of the recirculator Aereks-standard 15 allows its use in small premises of health facilities, food manufactures, hairdressers, sport facilities, children's, educational and large living spaces. Recirculator is intended for air disinfection from viral microorganisms in the presence of people. Fan mounted within the housing moves air through the inner chamber of the recirculator, where it is cleaned with ultraviolet radiation lamp of low pressure with a wave spectrum 253,7nm. Corpus of recirculator is made of metal and painted with white powder paint.

Power consumption, VA, - no more than 100
Overall dimensions, mm: (l*d*h) - 655*120*120



Bactericidal recirculator Aereks-standart 30

Bactericidal recirculator Aereks- standart 30 is widely used for air disinfection in health care, children's rooms, offices, especially during the rise of the threshold of viral diseases. Its use reduces the risk of infection by airborne droplets in crowded places. Decontamination is performed due to interaction of air masses with an ultraviolet radiation of germicidal lamp placed within the housing of the recirculator. Forced displacement of air through the recirculator is performed by axial fan. For efficient work recirculator is located horizontally on the wall. For disinfection of several premises consider installing it on a mobile tripod. Additionally, recirculator can be equipped with a network cable.

Power consumption, VA, - no more than 200
Overall dimensions, mm: (l*d*h) - 1115*120*120

Bactericidal recirculator

Aereks-professional 80

Bactericidal recirculator Aereks-professional 80 is the perfect solution for the air cleaning in medical, industrial and public institutions, in the presence of people, where in the first place it requires ease of use and modern design. Recycler has a handy remote control. In the housing of the recirculator, made of high quality plastic, there are two low-pressure germicidal lamps for air cleaning from pathogenic microorganism. Forced ventilation of air through the recirculator is performed by silent fan installed in the housing.

Power consumption, VA, - no more than 50

Overall dimensions, mm: (l*d*h) - 580*210*120



Bactericidal recirculator

Aereks-professional 560

The industrial recycler Aereks-professional 560 is designed for the decontamination of air in premises of a large volume in the presence people - industrial buildings, sports grounds, exhibition complexes. Powerful fan can move large masses of air through the inner chamber of the recirculator, where there are six low-pressure germicidal lamps. When the bacteria contact with ultraviolet radiation ionization and air purification occur. The design of the recirculator allows uninterrupted operation of lamps during long term. The housing of the recirculator is made of stainless steel and painted with a polymer coating and is resistant to disinfectant solutions. In the upper part the cover is installed for access to the lamps and the electrical components of the construction.

Power consumption, VA, - no more than 800

Number of germicidal lamps 30W- 6

Overall dimensions, mm: (l*d*h) - 1600*390*390



Bactericidal recirculator

Aereks-professional 1000

In order to maximize the efficiency of air purification in industrial premises a special high-power recirculator Aereks-professional 1000 was developed. The increased power of the fan allows you to skip large volumes of air per unit of time and to achieve a high degree of its purification due to the increase amount of germicidal lamps up to 11 pcs. When the bacteria contact with ultraviolet radiation ionization and air purification occur. The design of the recirculator allows uninterrupted operation of lamps during long term. The housing of the recirculator is made of stainless steel and painted with a polymer coating and is resistant to disinfectant solutions. In the upper part the cover is installed for access to the lamps and the electrical components of the construction.

Power consumption, VA, - no more than 1300

Number of germicidal lamps 30W- 11

Overall dimensions, mm: (l*d*h) - 1600*760*390



CAMERAS

Ultraviolet camera *ECONOM*



Ultraviolet camera ECONOM is the most compact model in a line of sterile cameras of the Company "Zavet." Its work area can contain up to two trays with a sterile instrument. The camera is not designed for sterilization of the instruments, but only for maintaining its sterility before use in medical institutions, health care centers and hairdressing salons. The camera body is made of high quality plastic, inside of which the low-pressure lamp 8W with an electronic-starter is installed. The emitted ultraviolet light with a wavelength of 253,7 nm. destroys all known bacteria if the camera cover is in a closed state. When using under control, the use of sterile instruments is allowed for 600 hours. If within 600 hours the tool has not been used, it must be re-sterilized. A useful volume of the chamber is 15 liters.

Power consumption, VA, - no more than 20

Overall dimensions, mm: (l*d*h) - 480*275*200

The internal camera dimensions, mm.: - 420*220*130

Ultraviolet camera *STANDARD*

Ultraviolet camera STANDARD thanks to its optimum dimensions is widely used in medical facilities for the storage of sterile instrument before performing different manipulations. Camera has a standard desktop version, but it can also be installed on mobile stand. Its operating area can contain up to five trays with pre-sterilized instrument. Ultraviolet cameras are not designed for sterilization of the instruments, but only to maintain sterility. The camera body is made of high quality metal and is powder coated that enables processing the surface with disinfectant solutions. The maintenance of sterility is carried out by the low pressure lamp with capacity of 15W at the closed camera cover. When using under control, the tool remains sterile for 600 hours. If within 600 hours the tool has not been used, it must be re-sterilized. Additionally, camera can be equipped with an indicating unit of sterility, sensor of turn off the lamp and autonomous power supply.

Power consumption, VA, - no more than 50

Overall dimensions, mm: (l*d*h) - 660*440*450

The internal camera dimensions, mm.: - 600*330*240



Ultraviolet camera MOBILE



Ultraviolet camera MOBILE is used for the storage of sterile instrument in surgical and other medical cabinets, where a large number of tools are used. Standard camera is mounted on the movable supports for convenience of its movement, but it can also be made in the desktop version. Ultraviolet cameras are not designed for sterilization of the instruments, but only to maintain sterility. The camera body is made of high quality metal and is powder coated that enables processing the surface with disinfectant solutions. The maintenance of sterility is carried out by the low pressure lamp with capacity of 30W at the closed camera cover. When using under control, the tool remains sterile for 600 hours. If within 600 hours the tool has not been used, it must be re-sterilized. Additionally, camera can be equipped with an indicating unit of sterility, sensor of turn off the lamp and autonomous power supply.

Power consumption, VA, - no more than 100

Overall dimensions, mm: (l*d*h) - 1060*440*1265

The internal camera dimensions, mm.: - 980*325*240

Apparatus for galvanization and electrophoresis **POTOK-01M**



Apparatus for galvanization and electrophoresis POTOK-01M is intended to influence with constant electric current on the human body for therapeutic and prophylactic purposes, as well as for iontophoresis in the conditions of clinic and hospital. It is a plastic case with the switch and handles of regulation of current submission. It comes bundled with two electrodes. Additionally, the apparatus can be equipped with various kinds of soft pillows for the physiotherapy. To operate with the apparatus is permitted the staff passed the preliminary instructing.

Power consumption, VA, - no more than 20
The maximum current in the circuit of the patient at a load is 500 ohms, mA - 50 + -5
Overall dimensions, mm: (l*d*h) - 180*180*95

Ultrasonic therapeutic apparatus **UZH - 1.01F**

Universal ultrasound therapeutic apparatus with microprocessor control UZH-1.01F is designed for ultrasound treatment of various diseases of the peripheral nervous system, musculoskeletal system, periodontal disease, keloids and postoperative scarring of face and neck urological diseases, chronic prostatitis, kidney stone disease, traumatic cataracts, hemophthalmia, partial atrophy of the optic nerve, retinal pigmentary degeneration, scarring diseases of eyelids. It is recommended for use in physiotherapeutic cabinets of the clinics.



Power consumption, VA, - no more than 50
Overall dimensions, mm: (l*d*h) - 220*220*80

Apparatus for darsonvalization **ISKRA-02M**

Apparatus ISKRA-02M is designed for the treatment of certain diseases of the nervous, cardiovascular, muscular, dentoalveolar system and skin. The most commonly local darsonvalization is used in neurological, otorhinolaryngological, surgical, dermatological, dental, gynecological practice. Apparatus for darsonvalization ISKRA is a pulse-modulated high-frequency generator, on which output resonator is turned on (step-up transformer) that feeds with high voltage glass vacuum electrodes of different shapes which ensure the application of the local darsonvalization. Operating factors of local darsonvalization are electromagnetic pulse oscillations, high voltage spark discharges and to some extent ozone and Nitrogen oxides.

Power consumption, VA, - no more than 150
Overall dimensions, mm: (l*d*h) - 170*45*45



Apparatus for darsonvalization **ISKRA -01M**

Apparatus ISKRA -01M is designed for the treatment of certain diseases of the nervous, cardiovascular, muscular, dentoalveolar system and skin. The most commonly is used local darsonvalization in neurological, otorhinolaryngological, surgical, dermatological, dental, gynecological practice. Apparatus for darsonvalization ISKRA is a pulse-modulated high-frequency generator, on which output resonator is turned on (step-up transformer) that feeds with high voltage glass vacuum electrodes of different shapes which ensure the application of the local darsonvalization. Operating factors of local darsonvalization are electromagnetic pulse oscillations, high voltage spark discharges and to some extent ozone and Nitrogen oxides.

Power consumption, VA, - no more than 250
Overall dimensions, mm: (l*d*h) - 230*220*85



Phototherapeutic irradiator OFP-01

Phototherapeutic irradiator OFP-01 is designed for the irradiation of the newborn with "blue" rays in the range of wavelengths 420-470 nm. in order to reduce the percentage content of bilirubin in blood. It can be effectively used in maternity hospitals, in the neonatal intensive care units, in children's outpatient facilities for the treatment of neonatal jaundice. Easy to move due to 4 rubberized wheels, two of which are equipped with brakes. The device is equipped with a mechanism for adjusting the height of the block of irradiation over the crib.

Power consumption, VA, - no more than 150
Overall dimensions, mm: (l*d*h) - 750*710*1615
The height of the irradiator can be adjusted from 1615 up to 2105 mm.



Irradiator for the upper heating of infant LVO-01

Irradiator for the upper heating of infant LVO-01 with a temperature sensor and backlit on a tripod is designed for heating of infant at carrying out of sanitary treatment, inspection, swaddling and other procedures in children's rooms of childbirth and the postpartum departments of maternity homes, hospitals and institutions. Irradiator equipped with lamp, infrared luminaire and temperature sensor is mounted on a tripod with wheels that ensure its convenient and easy movement. The main body of the irradiator has a control unit with two switches. The control unit is equipped with an electronic thermometer that controls the temperature on the surface of the table with a baby. The height of the irradiator is adjusted using the telescopic mechanism.

Power consumption, VA, - no more than 580
Overall dimensions, mm: (l*d*h) - 750*710*1720
The height of the irradiator can be adjusted from 1720 up to 2190 mm.





Phototherapeutic irradiator

OFP-02 *with changing table*

Phototherapeutic irradiator OFP-02 is designed for the irradiation of the newborn with "blue" rays in the range of wavelengths 420-470 nm. in order to reduce the percentage content of bilirubin in blood. It can be effectively used in maternity hospitals, in the neonatal intensive care units, in children's outpatient facilities for the treatment of neonatal jaundice. Easy to move due to 4 rubberized wheels, two of which are equipped with brakes. The device is equipped with a mechanism for adjusting the height of the block of irradiation over the crib. The kit includes a changing table for babies, made of metal profile with the bed out of particleboards.

Power consumption, VA, - no more than 150

Overall dimensions, mm: (l*d*h) - 750*710*1615

Overall dimensions of the table, mm. - 980*770*955

The height of the irradiator can be adjusted from 1615 up to 2105 mm.

Irradiator for the upper heating of infant

LVO-02 *with changing table*

Irradiator for the upper heating of infant LVO-02 with changing table is designed for heating of infant at carrying out of sanitary treatment, inspection, swaddling and other procedures in children's rooms of childbirth and the postpartum departments of maternity homes, hospitals and institutions. Irradiator equipped with lamp, infrared luminaire and temperature sensor is mounted on a tripod with wheels that ensure its convenient and easy movement. The main body of the irradiator has a control unit with two switches. The control unit is equipped with an electronic thermometer that controls the temperature on the surface of the table with a baby. The height of the irradiator is adjusted using the telescopic mechanism. The kit includes a changing table for babies, made of metal profile with the bed out of particleboards.

Power consumption, VA, - no more than 580

Overall dimensions, mm: (l*d*h) - 750*710*1720

The height of the irradiator can be adjusted from 1720 up to 2190 mm.





Mercury-quartz irradiator UGN-01M

Mercury-quartz irradiator UGN-01M is designed for the irradiation of the upper respiratory tract (nasal cavities, nasopharynx and tonsils) and ear cavity in physiotherapeutic cabinets of medical institutions. Inside the irradiator mercury-quartz lamp is installed radiating ultraviolet rays of a wide range (240 ... 320 nm.). The housing of the apparatus is made of stainless steel and plastic elements. The design of UGN-01M allows carry out therapeutic procedures simultaneously for four patients by selecting the appropriate nozzles for throat, ear or nose. For the separation of work areas there are four curtains for patients.

Power consumption, VA, - no more than 500
Overall dimensions, mm: (l*d*h) - 470*470*400

Mercury-quartz irradiator OKN-011M

Irradiator OKN-011M is designed for general and local individual irradiations in physiotherapeutic cabinets of medical establishments. Ultraviolet radiation emitted by lamp increases the overall resistance of the body, improves metabolism, has anti-inflammatory and antibacterial effect, it reduces the excitability of the elements of the skin.

Power consumption, VA, - no more than 260
The source of radiation - a lamp DRT-240
Overall dimensions, mm: (l*d*h) - 215*120*170



Portable mercury-quartz irradiator BOP-4M

Handheld portable irradiator BOP-4M is designed for topical irradiation (getting erythema on the skin) and local irradiation of ENT - organs (ear, nose and throat) using tubes. The product consists of a suitcase with built radiation unit with an ultraviolet lamp on the flexible tripod. This allows you to carry out therapeutic procedures in mobile way. The set includes three nozzles - ear, nose and throat.

Power consumption, VA, - no more than 350
The source of radiation - a lamp DRT-125
Overall dimensions, mm: (l*d*h) - 465*380*115

Mercury-quartz irradiator ORK-021M

Mercury-quartz irradiator ORK-021M is designed for general and local individual irradiations in physiotherapeutic cabinets of medical establishments. Corpus of the irradiator is made of metal profile and sheet profiled steel and painted with white powder paint. For ease of movement it is provided with four wheels. Illuminating element of the irradiator can be adjusted in height and rotation relative to the vertical rack

Power consumption, VA, - no more than 1000

The source of radiation - a lamp DRT-400

Overall dimensions, mm: (l*d*h) - 665*595*1200-1820



Mercury-quartz irradiator «Sunlight» OKN-011M

Quartz ultraviolet irradiator OKN-011M «Sunlight» is designed for topical irradiation (getting erythema on the skin) and local irradiation of ENT - organs (ear, nose and throat) using tubes. The device is also used in the treatment of such diseases as furuncle, pustular skin disease, trophic ulcer, bed sores, inflammatory and post-traumatic diseases of the joints, rheumatoid arthritis. The use of tubes allows use the device in the treatment of acute respiratory infections of the tonsils, asthma and other diseases within the cavity and the mucous membranes of the human body.

Power consumption, VA, - no more than 350

The source of radiation - a lamp DRT-125

Overall dimensions, mm: (l*d*h) - 215*120*170



Functional bed for supporting childbirth KFR



Functional bed for carrying out childbirth KFR is designed to accommodate on it parturient women in delivery rooms in second and third latency period and immediately after childbirth. The bed is a transforming construction, which allows give the most comfortable position to parturient woman body. For convenience, in anticipation of childbirth the bed has a mattress that can easy removed during the transformation of the bed construction. The bed consists of a fixed section with handles for hand and foot rests, as well as a sliding panel. For the convenience of placing of parturient woman on the bed the metal stair is provided. Adjusting the angle of the back section is performed manually. All fastening parts of accessories have galvanic coating. Additionally, the bed can be equipped with an infusion stand. The fixed part is mounted on supports and two rollers, which makes the bed easy to move.

Overall dimensions, mm: 2130*1000*1100
Trendelenburg 25 degrees (discrete); Anti Trendelenburg;

Obstetrical bed for maternity obstetric KA -2 (Rakhmanov type)



Obstetrical bed for carrying out childbirth KA -2 is designed to accommodate on it parturient women in delivery rooms in second and third latency period and immediately after childbirth. The bed is a transforming construction. Adjusting the angle of the back section is performed manually. The bed is equipped with a sliding panel, mounted on rubber wheels. All fastening parts of accessories have galvanic coating. The fixed part is mounted on supports and two rollers, which makes the bed easy to move. The bed frame is made of high quality steel profile, powder-coated, which makes the bed disinfection easier for medical personnel. Additionally, the bed can be equipped with a mattress and an infusion stand.

Overall dimensions, mm: 2400*850*880
Trendelenburg 25 degrees (discrete); Anti Trendelenburg;

Chair for childbirth CR

Chair for childbirth CR is designed for child delivery in a sitting position. The frame of the chair is made of metal profile and is white powder painted. The seat of the chair has seamless upholstery out of medical leather substitute. Upholstery color is selected by the customer. Handles are attached to the seat for easy location of parturient woman. The chair is mounted on four rubber supports.

Overall dimensions, mm: (l*d*h) - 720*720*480





Functional crib KFD-2 for children under one year

The crib KFD-2 is designed for placement of infants with neuro-vascular and cardiovascular diseases, as well as traumatized children. The crib is made of metal profiles and bed side rails are rigidly fixed. The lying of the bed is made of sheet metal and located on the optimal height for manipulations. For the convenience of moving the crib has wheels. Additionally, the crib can be equipped with a mattress from the child drawsheet MV-D1.

Overall dimensions, mm: (l*d*h) - 1050*750*450
The height of the bed from the floor, mm: - 540



Functional crib KFD-1 ("Alice" type)

Functional crib KFD-1 is designed to accommodate infants. The bed is used in hospitals and birthing centers. The cot consists of a metal frame on 4 wheels and plastic bath. Frame construction allows you to adjust the angle of the bath. The optimum height of the couveuse walls protects the infant against the ingress of drafts. Frame material - steel with white color polymeric covering. Material of the bath is organic glass.

Overall dimensions, mm: (l*d*h) - 1380*700*1100
The size of the bed: length - 1170 mm; width - 600 mm.
The height of the bed from the floor, mm: - 570



Functional children bed KFD-5 for children up to five years

Functional children bed KFD-5 for children up to five years is designed to accommodate children in medical institutions. The bed is made of metal profile and bed side rails are adjustable in height. The lying of the bed is adjustable in height and in tilt relative to the floor. For ease of movement the bed is placed on wheels. It can be equipped with a mattress MV-D.

Overall dimensions, mm: (l*d*h) - 1380*700*1100
The size of the bed: length - 1170 mm; width - 600 mm.
The height of the bed from the floor, mm: - 570

Physiotherapeutic irradiator ("Aist" type)

Physiotherapeutic irradiator of "Aist" type is designed to accommodate infants at carrying out of sanitary treatment, inspection, swaddling and other procedures in children's rooms of childbirth and the postpartum departments of maternity homes, hospitals and institutions. The lying of the table is covered with heated vinyl leather padded material from foam rubber. On the rack the luminaire of daylight is installed for illumination of the infant and infrared lamp for the upper heating of the child. The lying for the child's placement can be adjusted respect to the angle of inclination. The irradiator is mounted on four wheels, two of which are equipped with brakes.

Power consumption, VA, - no more than 500

Overall dimensions of the table:

- height of a lighting stand - 2040 mm;
- width - 925 mm;
- length - 1155 mm;



Changing table SPL

Changing table SPL is designed to accommodate infants at carrying out of sanitary treatment, inspection, swaddling and other procedures in children's rooms of childbirth and the postpartum departments of maternity homes, hospitals and institutions. The table is a collapsible metal frame mounted on plastic plugs. To the upper part of the table the lying with boards made of laminated chipboard is mounted. Additionally, the table can be equipped with mattress, a lower shelf and straightedge to measure the growth of the baby.

Overall dimensions, mm: (l*d*h) - 980*770*960



ARMCHAIRS



Gynecological armchair

KG-1ME

Armchair KG-1ME is used to conduct gynecological examinations, various procedures, as well as for small surgical interventions in gynecological cabinets and maternity departments. To the front of the bases single stage folding footstep is pivotally mounted. The lying of the armchair and footstep has seamless medical leatherette upholstery. Upholstery color is selected by the customer. The armchair has a fixed height and inclination angle of the seat, armrests and plastic kneeboards. Backrest inclination angle is adjusted mechanically 0-90 degrees.

Overall dimensions, mm: (l*d*h) -

1100-1650*1000*1650

Seat height from the floor, mm. - 800



Gynecological armchair

KG-1M

Armchair KG-1M is designed for carrying out gynecological examinations and procedures in various gynecological cabinets as well as for minor surgical interventions. Armchair is mounted on four legs - two rubber front and two metal rear - which are adjustable in height to create a stability of bases on uneven surfaces. Metal armrests are fixedly mounted and moving plastic kneeboards are mounted on the armchair. The slope of the backrest is adjusted mechanically by hand, and the change of the seating position in Trendelenburg position is performed using pneumatic drive. Also it comes standard with a stainless steel bowl and a comfortable step in order to approach the chair. Additionally is completed with infusion stand, colposcope holder, armrest for lasting infusions and ergonomic polymer kneeboards.

Overall dimensions, mm: (l*d*h) -

1100-1650*1000*1650

Seat height from the floor, mm. - 800

Gynecological armchair

KG-2M

Reliable and practical gynecological armchair KG-2M is widely used in gynecology cabinets to conduct surveys and various procedures, as well as minor surgical interventions. Also, thanks to a wider seat it can be used in urology. Armchair allows give different body position to the patient, including Anti Trendelenburg. To improve the stability the armchair is mounted on four rubber supports. Complete with an armchair is a comfortable footstep that can be placed in the most convenient location for the patient. Armchair KG-2M has a fixed height, an adjustment of the backrest and seat is carried out manually. Armchair is equipped with metal armrests, kneeboards, and stainless steel bowl. Additionally, we supply leg section, by means of which armchair is transformed into the treatment table.

Overall dimensions, mm: (l*d*h) -

1200-1500*1150*850-1500

Seat height from the floor, mm. – 850



Gynecological armchair

KG-3e with electro drive

Gynecological armchair KG-3e with electro drive is a convenient and practical solution for gynecological cabinet equipment that enables carry out procedures and minor surgical interventions as comfortable as possible for the doctor and the patient. Chair seat with the help of electric drive makes the most suitable position, including Trendelenburg and reverse Trendelenburg with no additional effort. Armchair is equipped with stainless steel bowl, manual control unit and comfortable plastic kneeboards. In the back section there is a section for disposable bed sheets.

Overall dimensions, mm: (l*d*h) - 1400*900*1350





Sorption armchair VR-1

Sorption armchair VR-1 is designed for comfortable placement of the patient in a sitting or lying position during the procedure of blood sampling, cytostatic treatment and dialysis procedure. Armchair consists of three sections, upholstered in medical imitation leather. Head and foot sections are adjustable in angle of inclination relative to the seat, which allows to give the body of the patient the most suitable and comfortable position. Sections of armchair are installed on a stable metal frame. In the lateral parts of armchair two movable armrest are installed to accommodate the patient's hands.

Overall dimensions, mm: (l*d*h) -
1380-1720*850*600-1260
Width of the seat – 480



Sorption armchair VR-1E

Sorption armchair VR-1E with electro drive is designed for comfortable placement of the patient in a sitting or lying position during the procedure of blood sampling, cytostatic treatment and dialysis procedure. The armchair constitutes the entire transformable bed mounted on a metal frame and adjustable in height by means of electric drive. In the lateral parts of armchair two movable armrest are installed to accommodate the patient's hands.

Overall dimensions, mm: (l*d*h) - 1350*900*1350
Width of the seat – 500



Sorption armchair with pneumatic drive VR-2

Sorption armchair VR-2 with adjustable armrests is designed for comfortable placement of the patient in a sitting or lying position during the procedure of blood sampling, cytostatic treatment and dialysis procedure. Head and foot sections are adjustable in angle of inclination relative to the seat using the pneumatic drive, which allows to give the body of the patient the most suitable and comfortable position. Sections of armchair are installed on a stable metal frame. In the lateral parts of armchair two movable armrest are installed to accommodate the patient's hands. The armrests can also be adjusted the angle of inclination for comfortable placement of the patient's arm.

Overall dimensions, mm: (l*d*h) - 1300*950*600-1260
Width of the seat – 480



Cosmetological armchair KOSMO

Cosmetological armchair KOSMO is designed to accommodate patients when performing pedicure and other cosmetology procedures. The armchair consists of three sections; foot section consists of two parts and is installed movably on hinges and is fixed by clamps. The height of backrest is adjusted using clamp. The armrests are installed on the armchair frame on the rotating hinged and can be folded back. The front part of the armchair is mounted on the fixed rubber supports, back one - on two rotating wheels with brakes.

Overall dimensions, mm: (l*d*h) - 1800*780*650-1400
Width of the seat – 580



Barany armchair KV-1

Barany armchair is used to check vestibular apparatus in a patient by its rotation around its axis. KV-1 is a seat mounted on four fixed supports. In the back part of it the handle is rigidly mounted, by means of which armchair is rotationally driven. For patient safety armchair has a chain-clasp.

Overall dimensions, mm: (l*d*h) - 780*780*1580



Otorhinolaryngological armchair KO-1

Otorhinolaryngological armchair KO-1 is designed for carrying out ENT procedures, physiotherapeutic procedures and inspections in ENT and physiotherapeutic rooms. The design of armchairs allows carry out the following manipulations with the patient:

- seat height adjustment;
- secure fixation of the head and cervical spine in a comfortable position using a soft head restraint;
- soft adjustable armrests allow you to create maximum comfort for the patient during the procedure of position;
- upholstered backrest is adjustable in angle of inclination.

**Overall dimensions, mm: (l*d*h) -
730-1390*630*1370-1520**

Wheelchair KVK-1

Wheelchair KVK-1 is used to move patients in a sitting position within medical institutions. KVK-1 consists of a soft seat, upholstered in medical imitation leather, mounted on four wheels. Two large wheels allow move patients comfortably through various obstacles. The armchair is an all-metal welded frame made of profile pipe. In the back part of an armchair there are handles for its movement. Upholstery color of KVK-1 is selected by the customer.

Overall dimensions, mm: (l*d*h) - 880*740*940
Dimensions of the seat - 450x460 mm



Commode chair

Commode chairs intended for those who have lost the ability to move independently and are necessary for more thorough and comfortable care related to the natural needs of the body. Commode chairs are very easy and reliable to use, which makes it possible to use them widely in hospitals and at home.

Overall dimensions, mm: (l*d*h) - 680*670*1050



CHAIRS

Donor chair with armrest



Donor chair SD-1 is designed for comfortable placement of donor on it during blood sampling, cytostatic and diatomaceous therapy. On one side of this chair is movably mounted, height adjustable armrest.

Overall dimensions, mm: (l*d*h) - 600*600*825

Donor chair with two armrests



Donor chair SD-2 is designed for comfortable placement of donor on it during blood sampling, cytostatic and diatomaceous therapy. On both sides of the chair two height-adjustable armrests are installed. The design of the chair is all-welded frame with a seat upholstered in vinyl leather.

Overall dimensions, mm: (l*d*h) - 660*600*825

Stationary chair with backrest SD



Stationary chair with backrest SD is designed for comfortable placement of the medical staff and the patient on it at the examination.

Overall dimensions, mm: (l*d*h) - 520*460*825

Chair for childbirth SR



Chair for childbirth CR is intended for child delivery in hospitals in a sitting position.

Overall dimensions, mm: (l*d*h) - 720*720*480

Massage chair MS



Disassemblable massage chair MS is intended for carrying out neck zone massage and neck and thoracic spine of the patient, manual therapy, physiotherapeutic and other medical procedures. Massage chair MS is very resistant thanks to the special design of the legs location. Positioning of the arms and shoulder joints during the massage is securely anchored thanks to a special stand. The patient's head during the massage is located on a special device with a convenient cut-out for the face. Massage chair is convenient because in the folded position it takes up very little space and can be used in health care settings and also for visiting patients at home.

Overall dimensions, mm: (l*d*h) - 900*520*1300

Overall dimensions in the folded position, mm: (l*d*h) - 1500*520*250

Screw chair SV



Stationary screw chair SV is intended for placing thereon a medical staff and the patient at the examination. The frame of the chair is mounted on three rubber supports to improve stability. Chair seat is height adjustable.

**Overall dimensions, mm: (l*d*h) -
600*600*450-600**

Mobile screw chair SV-P



Mobile screw chair SV-P is intended for placing thereon a medical staff and the patient at the examination. The frame of the chair is mounted on three wheel supports for easy moving. Chair seat is height adjustable.

**Overall dimensions, mm: (l*d*h) -
600*600*450-600**

Mobile screw chair SV-4P



Mobile screw chair SV-4P is intended for placing thereon a medical staff and the patient at the examination. The frame of the chair is mounted on four rubber supports to improve stability. Chair seat is height adjustable.

**Overall dimensions, mm: (l*d*h) -
600*600*450-600**

Mobile screw chair with backrest and footrest SVPS

Chair SVPS is designed for long-term sedentary work of the doctor. The design of the chair provides presence of footrest and the arc backrest. A chair frame made of metal profile is mounted on the movable support.

**Overall dimensions, mm:
(l*d*h) - 620*600*860**



Mobile screw chair with backrest SVS-P



Mobile screw chair with backrest SVS-P is designed to accommodate medical staff and the patient thereon at the examination. The frame of the chair is mounted on three wheel supports for easy moving. At the back of the chair there is an adjustable soft backrest. Chair seat is height adjustable.

Overall dimensions, mm: (l*d*h) - 620*620*980

Stationary chair for children SSD



Chair for children SSD is used in children's institutions to accommodate children when carrying out various activities. The frame of the chair is mounted on four rubber supports. At the back of the chair upholstered backrest is installed.

Overall dimensions, mm: (l*d*h) - 420*400*650

Mobile screw chair with backrest SVPS-5

Screw chair SVPS-5 with ergonomic frame on 5 legs allows you to create maximum comfort for healthcare workers and patients. A chair frame made of metal profile is mounted on the movable support.

**Overall dimensions, mm:
(l*d*h) - 620*620*980**



Screw chair with backrest SVS



Stationary screw chair with backrest SVS is intended for placing thereon a medical staff and the patient at the examination. The frame of the chair is mounted on three rubber supports to improve stability. At the back of the chair there is an adjustable soft backrest. Chair seat is height adjustable.

**Габаритные размеры, мм.: (дл*гл*выс) -
620*620*980**

COUCHES

Procedural couch with adjustable head support **KRP**

Couch KRP is widely used in most medical consulting rooms during the medical examination and performance of various procedures. The couch is a powder coated metal frame and set on him soft lying with head support adjustable on a discharge angle. Upholstery color of the lying is selected by the customer. The angle of elevation of the head restraint is manually adjusted. To optimize the transportation, the product is delivered unassembled. Additionally, it is possible to produce reinforced all-welded frame of the couch, equipped with the infusion rack, table for injection, armrests, seat belts, etc..

Overall dimensions, mm: (l*d*h) - 1900*580*530



Couch for physiotherapy room **KFP**



Procedural couch for physiotherapeutic procedures KFP with adjustable head support is designed to accommodate patients at medical examination and performance of various procedures in physiotherapy rooms. The peculiarity of this couch is that the frame is made of timber, which eliminates the action of metallic structural elements during various physiotherapeutic procedures.

Overall dimensions, mm: (l*d*h) - 1900*580*620

Massage couch with electric drive **KME**

Couch KME is designed to accommodate patients at medical examination, massage and various procedures. The frame is made of profile pipe, on which lies a soft bed for the patient. Adjustment of the bed in height is performed by electric drive. If necessary, the size of the couch and upholstery color can be agreed with the customer. For the stability the frame of KME is installed on the rubber legs.

Overall dimensions, mm: (l*d*h) - 2000*740*600-860



Gynecological couch KKG

Couch KKG is intended for carrying out intrauterine irrigation, as well as procedures in urological and proctologic offices. The couch consists of a metal frame with powder-coated, soft lying upholstered in medical imitation leather and devices for carrying out procedures. The couch is standard equipped with a couple of kneeboards and stainless bowl. The head restraint of the couch is manually adjusted. Additionally, the model can be manufactured with the possibility of taking a position of Trendelenburg and Reverse Trendelenburg. Also, the couch can be equipped with sink into the central sewer system and infusion stand.

Overall dimensions, mm: (l*d*h) - 1520*780*540



Procedural couch with a bedside table KRPT

Couch with a bedside table KRPT is designed for the inspection of patients in medical cabinets, as well as performing various procedures that require the location of patients at height more than 600 mm. For placing medications, tools and instruments the couch is completed with a bedside table made of particleboard, which is located in a recess under the lying of the couch. For disposable towels at the head of the couch towel holders are installed. To make the patient position comfortable bed has head support adjustable on a discharge angle. Upholstery color of the lying is selected by the customer.

**Overall dimensions, mm: (l*d*h) -
1920*580*750**



Massage couch KM

It is designed to accommodate patients when performing medical and other types of massage in the medical and health care facilities. The couch is adjustable in height, has a welded frame that makes the couch more stable during the massage. Other features include a high-quality disinfected covering. It is possible to produce a collapsible frame of the couch.

**Габаритные размеры, мм.: (дл*гл*выс) -
1850*580*800-1100**

Couch for ENT procedures KLOR

It is designed to accommodate patients at medical examination and performance of various procedures in ENT offices. The couch has a head support adjustable on the angle of inclination to the ground. (Below at the end)

Overall dimensions, mm: (l*d*h) - 1900*580*550



Couch for intestines flushing KPK

Couch for flushing the intestines KPK is designed for carrying out the procedures of the intestine flushing above the toilet. The frame of the couch is a powder coated welded steel construction. Additionally, it may be equipped with a stainless steel basin and discharge into the central sewer system.

Overall dimensions, mm: (l*d*h) - 1900*870*730



BANQUETTES/COUCHES. ROLLERS

Banquette with backrest MBS-3



Triple banquette with backrest MBS-3 is designed for the rest of three patients while waiting for the doctor. The product consists of a metal colored frame, to which soft seat and backrest are attached. In the lateral parts of banquette metal handles are installed. All external elements of the banquette can be treated with disinfectant solutions.

Overall dimensions, mm: (l*d*h) - 1390*460*900

Couch - bench KS

Couch-bench KS is designed to accommodate patients while waiting to see a doctor, and can also be used for simple medical procedures. The frame of the couch is made of stainless steel and coated with paint resistant to disinfection. The seat is seamlessly upholstered in faux leather.

Overall dimensions, mm: (l*d*h) - 1900*400*500



Procedural couch KP



Procedural couch KP is used for general examinations and procedures in medical cabinets. A distinctive feature of the couch is the lack of adjustable head restraint. The height of the couch is fixed in height. For easy transportation, the product is delivered unassembled. Upon customer request, welded couch can be supplied for the sustainability of the product. The lying of the couch is upholstered in medical imitation leather with soft foam rubber basis.

Overall dimensions, mm: (l*d*h) - 1900*580*530

Massage rollers

For the convenience of massage treatments various soft rollers that are placed under the head or other parts of the body to give a comfortable position are widely used. Rollers are of several modifications - round, semi-circular and triangular.

Length of rollers - 400 mm





Single banquette MB-1

Banquette MB-1 is designed to accommodate one patient while waiting for the doctor. The frame of the product is made of steel profile pipe, on which the upholstered seat is installed. Materials used in the production of banquettes allow its treatment with disinfectant solutions.

Overall dimensions, mm: (l*d*h) - 380*380*420

Double banquette MB-2

Banquette MB-2 is designed to accommodate two patients while waiting for the doctor. The frame of the product is made of steel profile pipe, on which the upholstered seat is installed. Materials used in the production of banquettes allow its treatment with disinfectant solutions.

Overall dimensions, mm: (l*d*h) - 800*380*420



Triple banquette MB-3

Banquette MB-3 is designed to accommodate three patients while waiting for the doctor. The frame of the product is made of steel profile pipe, on which the upholstered seat is installed. Materials used in the production of banquettes allow its treatment with disinfectant solutions.

Overall dimensions, mm: (l*d*h) - 1300*380*420



Quadruple banquette MB-4

Banquette MB-4 is designed to accommodate four patients while waiting for the doctor. The frame of the product is made of steel profile pipe, on which the upholstered seat is installed. Materials used in the production of banquettes allow its treatment with disinfectant solutions.

Overall dimensions, mm: (l*d*h) - 1800*380*420



Three-section massage table M-3



Massage table M-3 is designed to accommodate patients when performing medical and other types of massage in the medical and health care facilities. The table has three sections, two of which are movable. Also a comfortable head support with a hole for the face of the patient is attached to the frame. The upholstery is made of high quality synthetic leather, resistant to the environment and disinfecting solutions. The height of the table lying is adjustable with a help of moving legs.

Overall dimensions, mm: (l*d*h) - 2300*620*650-850

Single-section massage table M-1



Massage table M-1 is designed to accommodate a patient when performing medical and other types of massage in the medical and health care facilities. The table is mounted on height-adjustable stands. In the head section of the frame movable head restraint is fastened and on the side - comfortable armrests.

Overall dimensions, mm: (l*d*h) - 2000*650*700-900



Special massage table MS

Massage table MS is designed specifically for massage in a more comfortable position for the patient. The metal frame is mounted on ergonomic height-adjustable stands, allowing give the optimum height to the table lying and fix it securely. In the head section of the product soft head support and adjustable armrests are installed. Table lying consists of three soft sections.

Overall dimensions, mm: (l*d*h) - 2250*665*550-760

Wooden massage table DM

Wooden massage table DM is designed for therapeutic and preventive massage in medical institutions. The table frame is made of solid types of wood. A soft lying covered with medical leatherette is attached. In the head supports the cutout for the patient's face is placed, which is closed with a soft cover. The head support is adjustable in the angle of inclination, so you can use the table as a procedural couch. Legs of the product are made of two parts, which allows you to fix the working surface at a convenient height. In the lower part of the table a wooden shelf for placing auxiliary accessories is placed..

**Overall dimensions, mm: (l*d*h) -
1940*800*680-830**



Wooden massage table DM-SPA

Wooden massage table DM-SPA is designed for therapeutic and preventive massage in medical institutions and SPA-salons. Table is a collapsible design, made of solid types of wood. A soft lying covered with medical leatherette is attached. In the head supports the cutout for the patient's face is placed, which is closed with a soft cover. In the lower part of the table a wooden shelf for placing auxiliary accessories is placed.

**Overall dimensions, mm: (l*d*h) -
1940*800*710**



Dressing table P-1

Dressing table P-1 is designed for comfortable placement of patients in dressing and surgical cabinets, as well as for various procedures. The table is made of metal profile, powder coated in white. Due to the high legs, table P-1 allows manipulations in dressing cabinets as comfortable as possible for the patient and the doctor.

**Overall dimensions, mm: (l*d*h) -
1900*600*900**



Triple-section functional bed KF-3M



Triple-section functional bed KF-3M is designed for a comfortable stay of patients in hospital wards and outpatient treatment. The bed is a collapsible design, made of metal profile, powder coated. The lying of the bed consists of three movable sections, trimmed with sheet metal, allowing giving it the most convenient and appropriate for the patient's shape. Adjustment of the moving parts of the bed is carried out manually. Also, on customer request, the lying may be made out of painted metal mesh. Additionally, customized, the bed can be equipped with three-section mattress out of medical leatherette, side rails, device of "Gus" type, infusion stand and stand for urinal.

Overall dimensions, mm: (l*d*h) - 2000*950*880
The height of the bed above the floor - 570 mm;
The length of the bed - 1900 mm;
The angle of elevation of dorsal panel - from 0 to 75 degrees

Double-section functional bed KF-2M

Double-section functional bed KF-2M is designed for a comfortable stay of patients in hospital wards and outpatient treatment. The lying of the bed consists of one fixed foot section and a movable head section, trimmed with sheet metal, allowing giving it the most convenient and appropriate for the patient's shape. Also, on customer request, the lying may be made out of painted metal mesh. Additionally, customized, the bed can be equipped with double-section mattress out of medical leatherette, side rails, device of "Gus" type, infusion stand and stand for urinal.

Overall dimensions, mm: (l*d*h) - 2000*950*880
The height of the bed above the floor - 570 mm;
The length of the bed - 1900 mm;
The angle of elevation of dorsal panel - from 0 to 75 degrees



Medical stationary functional bed KFM



Functional bed KFM is designed to meet requirements imposed on the placement of patients with severe diseases of the neuro-vascular and cardiovascular system and the optimum choice for traumatized patients. The bed frame is covered with durable white powder painted finish, resistant to the disinfecting solutions. At the request of the customer it is possible to produce a mesh bed. The headboard is made of a bent pipe, which makes the bed more reliable due to the absence of sharp corners. Legs of CPM are mounted on plastic plugs. Additionally, customized, the bed can be equipped with double-section mattress out of medical leatherette, side rails, device of "Gus" type, infusion stand and stand for urinal.

Overall dimensions, mm: (l*d*h) - 2000*950*880

Four-section functional bed KF-4M



Four-section functional bed KF-4M is designed to accommodate patients with severe disease: neuro-vascular, cardiovascular and traumatized patients. The bed consists of a metal frame, made of high-quality profiled steel, to which four sections are attached. The head and two foot sections can be adjusted manually. As standard, sections are covered with sheet metal, but also can be manufactured with the grid. The whole construction is covered with powder polymer coating, resistant to disinfection solutions. The bed is equipped with four wheels, on two of which brakes are mounted. The design of the bed has no protruding or sharp parts that provides a warning of injury during operation and provides easy access of medical personnel to the patient. Additionally, the bed can be equipped with:

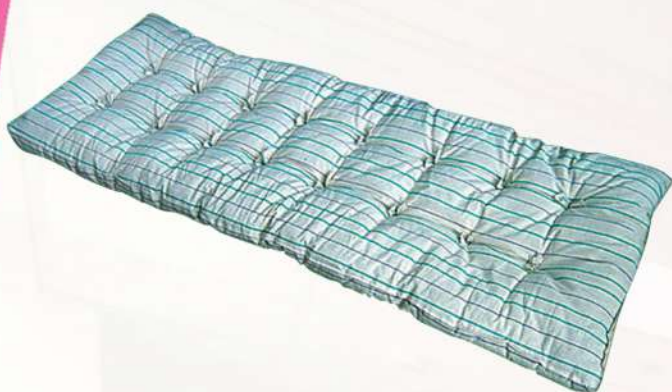
- mattress with disinfectant coating;
- ergonomic backrest and handrails (A);
- infusion stand (B);
- device of "Gus" type (C);
- standard handrails (D);
- stand for urinal (E).

Overall dimensions, mm: (l*d*h) - 2000*950*880

The height of the bed above the floor – 570 mm;

The length of the bed – 1900 mm;

The angle of elevation of dorsal panel - from 0 to 75 degrees



50mm cotton mattress MV-1

Cotton mattress MV-1 is designed for use with medical beds and is an inexpensive solution for equipping hospitals. It is made of mattress fabric with soft filler made of felt.

Overall dimensions, mm: (l*d*h) - 1900*800*50



80mm single-section mattress with disinfectant coating MD-1 (with breathable coating MD-1m)

Mattresses MD-1 and MD-1m are designed for use with medical beds without functional sections. They are made of medical leatherette resistant to disinfection solutions, with soft foam filling and auxiliary materials. In the manufacture of mattress MD-1m the special disinfectant coating is used allowing for air flow, thus reducing the harmful effects of the lack of ventilation for patient body.

Overall dimensions, mm: (l*d*h) - 1900*750*80



80mm double-section mattress with disinfectant coating MD-2 (with breathable coating MD-2m)

Mattresses MD-2 and MD-2m are designed for use with double-section medical functional beds. They are made of medical leatherette resistant to disinfection solutions, with soft foam filling and auxiliary materials. In the manufacture of mattress MD-2m the special disinfectant coating is used allowing for air flow, thus reducing the harmful effects of the lack of ventilation for patient body.

Overall dimensions, mm: (l*d*h) - 1900*750*80



80mm triple-section mattress with disinfectant coating MD-3 (with breathable coating MD-3m)

Mattresses MD-3 and MD-3m are designed for use with triple-section medical functional beds. They are made of medical leatherette resistant to disinfection solutions, with soft foam filling and auxiliary materials. In the manufacture of mattress MD-3m the special disinfectant coating is used allowing for air flow, thus reducing the harmful effects of the lack of ventilation for patient body.

Overall dimensions, mm: (l*d*h) - 1900*750*80



80mm four-section mattress with disinfectant coating MD-4 (with breathable coating MD-4m)

Mattresses MD-4 and MD-4m are designed for use with four-section medical functional beds. They are made of medical leatherette resistant to disinfection solutions, with soft foam filling and auxiliary materials. In the manufacture of mattress MD-4m the special disinfectant coating is used allowing for air flow, thus reducing the harmful effects of the lack of ventilation for patient body.

Overall dimensions, mm: (l*d*h) - 1900*750*80

Traumatological stationary bed KST

Traumatological stationary bed KST is designed to accommodate patients in traumatological departments. The bed allows you to:

- give the patient necessary positions in the postoperative period and rehabilitation;
- place the patient at different angles;
- adjust the tilt of the body section and the slope of the section for feet;
- carry out the procedure of traction and double traction in traumatological patients.

This bed has a dual system of orthopedic traction, counterweights for 2kg and 5kg in 2 pieces. Additionally, the bed is equipped with a mattress, infusion stand and a device for lifting the patient "Gus".

Overall dimensions, mm: (l*d*h) - 2290*880*1870

The height of the bed above the floor – 570 mm;

The length of the bed – 1900 mm



Bed for patients with neuro-psychic diseases KPB



Bed for patients with neuro-psychic diseases KPB is designed for the restless mental patients in psychiatric hospitals and psychoneurological hospitals, as well as drug rehabilitation centers. The bed is made of sturdy metal profile, polymer powder-coated. On a lying of the bed there are belt anchorages in the chest part, at the level of the hands and feet. Additionally, it can be equipped with belts.

**Overall dimensions, mm: (l*d*h) -
1970*810*750**

CARTS



Cart for food transportation TPP

Cart TPP is designed to transport food from the catering department in the departments of medical institutions. Cart is made of a metal profile, painted with powder polymeric covering. It has two metal shelves with load capacity up to 20 kg on the top shelf and up to 80kg on the bottom shelf. Cart is installed on hardware rubber wheels, two of which have brakes.

Overall dimensions, mm: (l*d*h) - 940*540*940



Strengthened cart for food transportation TPP-U

Cart TPP-U is designed to transport food both within medical institutions and on uneven surfaces on the street. Structurally, the product consists of an upper shelf with metal bumpers and lower shelf with the bounding profile on both sides, as well as the closing metal file cabinet. The cart frame is mounted on reinforced rubber wheels, two of which are equipped with brakes, the other two have a larger diameter for the safe overcoming of obstacles. For the convenience of moving, the cart is equipped with a metal handle.

Overall dimensions, mm: (l*d*h) - 1540*800*970



Cart for drums transportation TSKK

Cart TSKK is designed to transport sterilization boxes inside medical institutions. The cart frame is made of metal profiles and painted with white powder paint. On the cart there are three metal shelves and handles for its easy movement on four hardware wheels.

Overall dimensions, mm: (l*d*h) - 940*540*940



In-vessel universal cart TVK

In-vessel cart TVK is designed for transportation of various cargoes, containers of medical supplies, linen, clothes, mattresses, medical equipment and other things. It is used in medical facilities. The frame (fully welded) is made of steel pipes with the application of environmentally friendly polymer powder coating, resistant to repeated treatment with disinfectant solutions used in medicine. Has a protective fence. The base is mounted on 4 rubber wheels, two of which are self-orienting.

Overall dimensions, mm: (l*d*h) - 1050*600*1000

Cart for dirty and clean laundry TGB

It is designed for transportation of dirty and clean laundry indoors when serving patients in medical institutions and disabled people in boarding houses. Cart is made of metal profiles and is powder coated. All shelves are mesh-based or are made of sheet metal. The cart is mounted on the hardware wheels.

Overall dimensions, mm: (l*d*h) - 1380*540*925



Cart for premises cleaning TUP

Cart TUP is designed for premises cleaning in medical and other health care institutions. Cart is made of a metal frame mounted on four wheels, two of which have brakes. The design of the carts provides various tools for placing equipment - garbage bags, hooks for scoops and mop fixation, shelf for detergents and bucket holder. Package content of additional accessories must be agreed when ordering the cart.

Overall dimensions, mm: (l*d*h) - 1100*520*950



Cylinder truck TDB-1, TDB-2



Carts TDB-1 and TDB-2 are designed to carry indoors cylinders up to 50 liters. The frame of the product is made of metal profile and is mounted on two hardware wheels. To prevent loss of the cylinder the chain is attached to the cart's frame. TDB-2 is designed for transportation of two cylinders.

**Overall dimensions, mm: (l*d*h)
TDB-1: 430*390*1520 / TDB-2: 880*630*1500**

Cart for transportation of patients with removable stretchers TBS-150



Cart TBS-150 is designed to transport patients between hospital facilities. Cart structure consists of two parts - a lower frame on wheels and detachable stretchers on rubber feet. The presence of detachable stretchers allows you to move the patient on the stairs and other uneven areas. On stretchers there is also an adjustable head support for giving a comfortable position of the head. The frame of the product is installed on the reinforced wheels to withstand dynamic loads up to 120 kg. Additionally, cart can be equipped with a washable mattress, straps for the torso and legs, fastening for apparatuses for intensive care.

Overall dimensions, mm: (l*d*h) - 2100*670*830

Strengthened cart for transportation of patients with removable stretchers TBS-150u

Cart TBS-150u is designed to transport patients between hospital facilities and on the street. Cart structure corresponds to TBS-150, with one pair of wheels has a larger diameter that allows to transport the patient on uneven surfaces.

Overall dimensions, mm: (l*d*h) - 2100*750*830



Cart for transportation of the patient with height adjustment TPBR



Cart TPBR is designed to transport patients within the medical institutions between facilities: surgical, X-ray и medical treatment departments, as well as hospital wards. The frame of the products is made of steel pipes, and a bed is made of chipboard and foam rubber upholstered in vinyl leather. The head restraint of the cart is adjustable in angle of inclination. Fixation of angular position of the head restraint is carried out automatically. The height of the cart lying is regulated by mechanical means (turning the knob). In the foot part the handle is rigidly mounted for patients' transportation.

Overall dimensions, mm: (l*d*h) - 2060*740*700-1050

Cart for transportation of the patient with height adjustment, electric drive and autonomous power supply TPBE

Cart TPBE is designed for transportation of patients between departments of medical institutions at the same time for the convenience of adjustment of height of cart lying the kit includes electrolift with autonomous power supply unit. The cart frame is installed on reinforced wheels, two of which are equipped with brakes.

Габаритные размеры, мм.: (дл*гл*выс) - 2000*860*830-1050



Cart for transportation of patients TPB



Cart for transportation of patients TPB combines the functionality of in-vessel cart for transportation of patients and couch with a head support that allows inspect the patients in comfortable conditions. The presence of reinforced wheels allows use TPB not only indoors, but also on the open equal platforms. Structurally, the cart is made of painted steel profile, on which soft couch covered with medical leatherette is installed. In the foot part there is a comfortable handle for moving the cart.

Overall dimensions, mm: (l*d*h) - 2000*605*980

Cart for transportation of patients with handrails TPB-P

Cart for transportation of patients TPB-P is designed to transport patients within the premises. The product design corresponds to the cart TPB, and at the same time to prevent the fall of the patient in the lateral parts of the structure retractable ergonomic handrails are installed.

Overall dimensions, mm: (l*d*h) - 2000*605*980-1100



Anatomical cart TAP

Anatomical cart TAP is designed to transport corpses and shifting them in anatomical departments and morgues. The working surface of the cart is made of stainless steel resistant to the effects of inimical environment.

Overall dimensions, mm: (l*d*h) - 2100*670*830

Nonmagnetic cart MRT

Nonmagnetic cart MRT is designed for use in cabinets MRT. Wireframe made of nonmagnetic materials - pabular stainless steel, aluminum or plastic. The cart is mounted on reinforced rubber wheels. Additionally, the kit may include a soft mattress.

Overall dimensions, mm: (l*d*h) - 2120*580*800



TABLES

Manipulating table SM-3



Table SM-3 is designed to accommodate instruments and materials at carrying out manipulation. Table consists of a metal drawer and lower shelf with glass, mounted on a metal frame. On the drawer stainless shelf is installed for placement of tools. For moving indoors wheel supports are provided. Simplicity, convenience and functionality of the table design SM-3 make it suitable for wide variety of medical offices.

Overall dimensions, mm: (l*d*h) - 660*510*920
Shelf size, mm: - 420*570

Instrumental table CP



Instrumental table CP represents a completely welded construction with three shelves, mounted on plastic wheels. This table is used to accommodate different apparatuses and tools in medical offices. Convenient placement of shelves allows placing necessary items in optimal way for the doctor.

Overall dimensions, mm: (l*d*h) - 620*540*920
Shelf size, mm: - 420*570

Side table SI-5



Table SI-5 is designed to accommodate medical instruments during various operations, manipulations and procedures in medical and laboratory rooms. The table is made of metal profile and is painted with white powder paint. Upper and lower shelves are made of glass. Additionally, it is possible to manufacture both metal shelves and shelves made of stainless steel.

Overall dimensions, mm: (l*d*h) - 660*430*880
Shelf size, mm: - 420*570

Special instrumental table SIS



Instrumental table SIS is used in hospitals to accommodate specialized tools. It is a completely welded construction with two stainless steel shelves and handles for its movement. The frame of the product is installed on wheel supports. Tables can be manufactured entirely from stainless steel.

Overall dimensions, mm: (l*d*h) - 620*420*815
Shelf size, mm: - 380*480

Dental table SS



The table SS is widely used in dental offices to accommodate tools, mix medications and carry out dental procedures. The feature of this table is the lack of a front rim on the upper shelf that allows you to use it for manipulating with medications. For the stability the SS table is installed on rubber supports. At the request of the customer, it is possible to produce a table on wheels.

Overall dimensions, mm: (l*d*h) - 660*430*850
Shelf size, mm: - 420*570

Nurse table SMS



Nurses table is designed to accommodate and transport of medical instruments and materials inside the buildings of medical facilities. A distinctive feature of the table is its equipment with reinforced wheels with absorbing rubber coating that allows it safe movement.

Overall dimensions, mm: (l*d*h) - 660*530*900
Shelf size, mm: - 420*570

Manipulation table with 2 drawers SM-3-2



The table SM-3-2 is designed to accommodate and transport of medical instruments and materials inside the buildings of medical facilities. The table consists of two boxes with upper stainless shelf and lower glass shelf.

Overall dimensions, mm: (l*d*h) - 660*430*900
Shelf size, mm: - 420*570

Anesthesiologist table SA



The table SA is designed to accommodate tools and medicines necessary for anesthesiologist during surgeries. The table is made of metal profile, powder coated, resistant to disinfectant solutions. The base of the table is set on plastic wheels that allows set an upper work surface in the most convenient location for carrying out anesthesia and other manipulations. The surface of the table shelf is made of stainless steel.

Overall dimensions, mm: (l*d*h) - 700*640*850-1300
Shelf size, mm: - 420*570

Table for surgery on the hand SDR



The table SDR is used in surgical and treatment rooms for carrying out surgical procedures on the hand of the patient, as well as for external inspection and various manipulations. The upper part of the table is upholstered in medical imitation leather with padded material from foam rubber and is mounted on a stable vertical rack. To adjust the panel on a discharge angle manual mechanism with clip is used.

Overall dimensions, mm: (l*d*h) - 520*460*700-900

Overbed table CNP



Overbed table CNP is widely used in hospital in-patient departments for comfortable stay of patients in the supine position. The design of the table allows the patient to eat, read books and use a laptop. Table top is made in the form of turning panel from the laminated chipboard. For ease of use, a table is installed on plastic wheels.

Overall dimensions, mm: (l*d*h) - 755*670*850-1200

CABINETS

Univalve medical cabinet with safe SHM-1



Medical cabinet SHM-1 is designed for use in all types of medical offices where it is necessary to place instruments and materials in space isolated from the ambient air. The ease of design makes these cabinets irreplaceable in hospitals. The cabinet is made of high quality steel profile, in which there are four glass shelves to accommodate instruments. From all sides the cabinet is closed by glass walls, insulating the contents from the surrounding air.

Overall dimensions, mm: (l*d*h) - 500*400*1620



Univalve medical cabinet with safe SHM-1S

Cabinet SHM-1S is designed to accommodate tools, materials and medicines in the dressing rooms, surgery rooms and other medical institutions. The cabinet is a metallic construction made of standardized elements. Cabinet walls, doors and shelves are made of glass. On a door a metallic handle is installed which in the closed position locks the door with a magnet. Cabinet has 2 glass shelves. At the bottom of the cabinet is a metal safe, which is lockable. Inside the safe glass shelf is also installed.

Overall dimensions, mm: (l*d*h) - 500*400*1620

Bivalve medical cabinet with safe SHM-2

Cabinet SHM-2 is designed to accommodate tools, materials and medicines in the dressing rooms, surgery rooms and other medical institutions. Thanks to the transparent walls, you can easily find the necessary remedy. The cabinet is made of metal profile, powder coated, resistant to the treatment with disinfectant solutions. The cabinet has 4 shelves, permissible load for which is 2 kg. Also, it is possible to produce the cabinet made of aluminum profile.

**Overall dimensions, mm: (l*d*h) -
1010*400*1620**



Bivalve medical cabinet with safe SHM-2S

Medical cabinet with safe SHM-2S is designed to accommodate tools, materials and medicines in the dressing rooms, surgery rooms and other medical institutions. The cabinet frame is made of metal profile and painted with white powder paint. At the bottom of the cabinet bivalve metal safe is situated, which is locked with a key. Inside the safe a glass shelf is installed. At the request of the customer the cabinet could be an all-metal. At the top of the cabinet two glass shelves are installed with the maximum permissible load of 2 kg. The edges of doors and front edges of the shelves are processed in order to avoid cuts. The door is fixed by a magnet. Construction of the cabinet has no projecting and sharp parts, providing injury prevention during operation.

Overall dimensions, mm: (l*d*h) - 1010*400*1620



Laboratory hood SHV-1



Laboratory hood SHV-1 is designed for experiments and tests in laboratories where a secure personnel protection from harmful substances is necessary. The presence of transparent glass allows you to control the course of the laboratory processes. Cabinet SHV-1 consists of two parts - the lower opening cabinet with two doors, and the upper working part. On the front panel can be additionally situated switches and additional outlets. As standard, the cabinet is equipped with worktop of laminated chipboard, resistant to aggressive substances. Under the order, the worktop can be made of acid- alkali resistance tiles. As standard, the cabinet has a 125mm hole for the fan (not included in delivery). Upon request of the customer we can install the sink with drain, the light above the work surface, fan and hood speed controller.

Overall dimensions, mm: (l*d*h) - 1100*700*2200

Laboratory hood SHV-2

Laboratory hood SHV-2 is designed for chemical and physical analysis with harmful substances giving off vapors; these cabinets are used in a structure of laboratory complexes for different purposes. The presence of transparent glass allows you to control the course of the laboratory processes. Cabinet SHV-2 consists of two parts - the lower opening cabinet with two doors, and the upper working part. On the front panel can be additionally situated switches and additional outlets. As standard, the cabinet is equipped with worktop of laminated chipboard, resistant to aggressive substances. Under the order, the worktop can be made of acid- alkali resistance tiles. As standard, the cabinet has a 125mm hole for the fan (not included in delivery). Upon request of the customer we can install the sink with drain, the light above the work surface, fan and hood speed controller.

Overall dimensions, mm: (l*d*h) - 1500*700*2200



Laboratory cabinets SHL

Laboratory cabinets of SHL series is designed for storing various drugs and tools in laboratories and medical facilities. Cabinets are collapsible construction made of metal panels, painted with powder paint and glass, placed in the door sections. Inside the cabinets metal shelves are installed. The doors are closed on the lock. We offer various modifications of cabinets - with the bottom safe and with no safe, univalve and bivalve.

Overall dimensions SHL-1, SHL-1s, mm: (l*d*h) - 500*460*1970

Overall dimensions SHL-2, SHL-2s, mm: (l*d*h) - 900*460*1970



SHL-2s with safe



SHL-1

SHL-1s with safe



Bedstand from chipboard TP-2



Bedstand TP-2 is intended to be placed near the bedside in hospitals, military units, orphanages and nursing homes. The frame of the bedside table is made of laminated chipboard. In the upper part of the case the drawer is installed, the lower part is divided into two compartments and closed by the door. For the convenience of moving the cabinet is mounted on wheels.

Overall dimensions, mm: (l*d*h) - 500*500*670

Bedstand TP-1s with a table from chipboard



This cabinet is intended to be placed near the bed of the patient in hospitals, military units, orphanages and nursing homes. The frame of the bedside table is made of laminated chipboard; in the upper part of the bedside table for the convenience of patients folding rack for meals, reading books or working on a computer is attached; lower part of the bedside table is closed by door; in the inner part there is a shelf; for the convenience of medical personnel the bedside table is mounted on wheels.

Overall dimensions, mm: (l*d*h) - 520*390*850

Movable cabinets made of aluminum profiles



TA-1



TA-2



TA-3

Bedside tables made of aluminum profile of TA series are designed to be placed near the bed of the patient. The frame of bedside table is made of aluminum profile, panels and boxes are made of laminated chipboard. For the convenience of moving the cabinet is mounted on wheels.

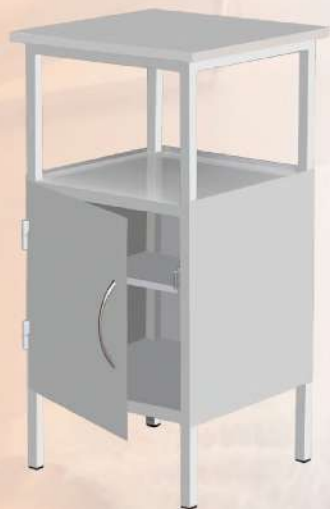
Overall dimensions TA-1, TA-2, TA-3, mm: (l*d*h) - 400*400*700

Overall dimensions TA-4m, mm: (l*d*h) - 670*400*1370



TA-4m

Bedstand TP-1



Bedside table TP-1 is intended to be placed near the bed of the patient in the hospitals. The corpus of product is made of stainless steel and painted with a polymer coating, resistant to disinfection. Nightstand consists of closing drawer with a shelf inside and upper worktop made of chipboard.

Overall dimensions, mm: (l*d*h) - 380*380*770

Hinged aid kit SHMN



Hinged aid kit SHMN is designed for placement of medicines and materials in medical and other institutions. Inside the product an extra shelf is installed. The convenience and simplicity of design allow you to use the hinged aid kit wherever you need to create an isolated space for medications. Cabinet is closed by glass door with a magnet.

Overall dimensions, mm: (l*d*h) - 405*225*540

Univalve medical cabinet for robes SHHM



Cabinet SHHM-1 is designed to put clothes in dressing rooms, surgery rooms and other medical institutions. Inside the cabinet shelf and mount for clothes hangers are installed. The cabinet door is locked with a key.

Overall dimensions, mm: (l*d*h) - 500*400*1800

Bivalve medical cabinet for robes SHHM-2



Cabinet SHHM-2 is designed to put clothes in dressing rooms, surgery rooms and other medical institutions. The cabinet consists of two sections. Inside the cabinet shelf and mount for clothes hangers are installed. The cabinet door is locked with a key.

Overall dimensions, mm: (l*d*h) - 800*500*1800

CARRIERS, STANDS

Carrier for two basins PT-2



Carrier for two basins PT-2 is designed to accommodate and use simultaneously two stainless steel basins in surgery and treatment rooms during operations. The frame of the carrier is made of metal profile and painted with white powder paint. In the upper part of the construction the carrier for two baskets for basins is installed, which can be adjusted in height. The frame is mounted on three rubber supports. The carrier comes with two stainless steel basins with a diameter of 300 mm.

Overall dimensions, mm: (l*d*h) - 700*450*900-1050

Carrier for dressing box PB



Carrier for dressing box PB is designed for easy placement and use of sterilization boxes KSK in surgery and treatment rooms during operations. For easy access to the instrument the carrier is equipped with a platform with movable lever that allows open the box and get sterile tools during operations without hands. For this purpose at the bottom of the carrier the lever is installed by pressing on which with the leg, the doctor opens the lid of the box. Fasteners of dressing box are regulated by any diameter of the box and firmly fix it. For the stability the frame of the carrier is mounted on rubber supports.

Overall dimensions, mm: (l*d*h) - 520*450*1200



Carrier for one basin PT-1

Carrier for basin PT-1 is designed to accommodate and use stainless steel basins in surgery and treatment rooms during operations. The frame of the carrier is made of metal profile and painted with white powder paint. In the upper part of the construction the basket for basin is installed, which can be adjusted in height. The frame is mounted on three rubber supports. The carrier comes with stainless steel basin with a diameter of 300 mm.

Overall dimensions, mm: (l*d*h) - 450*450*900-1050

Resuscitator stand

Stand is designed to accommodate the artificial lung ventilation apparatus in hospitals, vehicles and homes.

Overall dimensions, mm: (l*d*h) - 650*650*830



Endoscopic stand

Endoscopic stand is designed for storing and drying of flexible-fiber endoscopes in a functional position and is recommended for use in all hospitals where researches with the use of endoscopes are conducted. Stand design is agreed with the customer.

Overall dimensions, mm: (l*d*h) - 745*580*1340
The height of the top shelf - 1000mm



Laparoscopic stand LAP-1



Laparoscopic stand LAP-1 is designed to accommodate diagnostic equipment, tools and instruments. Stand is made of stainless steel, which is powder painted. Stand is mounted on the hardware wheels. It ideally suited for use in the surgery rooms and medical examination rooms. Stand is made to suit individual dimensions of the customer.

Overall dimensions, mm: (l*d*h) - 750*700*1600

Carrier for constant-temperature bath (GP, SHSS) PGP



Carrier PGP is designed to accommodate large devices such as a constant-temperature bath, GP, HSS and is used in laboratories and sterilization facilities. The frame of the carrier is made of metal profile and painted with white powder paint. Carrier has two shelves and is mounted on four support legs.

Overall dimensions, mm: (l*d*h) - 620*600*825

STADIOMETER / PANEL SCREENS

Stadiometer "sitting-standing" RS-2000

Stadiometer RS-2000 is designed to measure the growth of the patient in sitting and standing position. Stadiometer is a metal frame with a platform made of particleboard upholstered in leatherette for measuring the growth of the patient in a standing position and a reclining seat for measuring the growth in a sitting position. For the stability stadiometer is installed on four support legs. Patient's height is measured by the mobile level established on the rack.

Overall dimensions, mm:
(l*d*h) - 400*380*2170



Floor-mounted stadiometer RP-2000

Floor-mounted stadiometer RP-2000 is designed to measure the growth of the patient in the standing position. Simplicity and ease of use make stadiometer RP-2000 the best solution for equipment of medical offices. Stadiometer is a metal frame, powder coated with a platform for the patient's legs and moving level on the vertical metal rack.

Overall dimensions, mm:
(l*d*h) - 400*380*2170



Floor-mounted stadiometer with scales RPV-2000

Stadiometer with scales RPV-2000 is designed for measuring the height and weight of the patient in the standing position. Stadiometer is a metal frame with installed falling back platform of particleboard, upholstered in leatherette and mobile level on the vertical rack. Under the platform floor scales are established to measure the weight of the patient. To use them you need simply raise the platform. Stadiometer RPV-2000 can be equipped with both mechanical and electronic scales, depending on customer choice.

Overall dimensions, mm: (l*d*h) - 400*380*2170



Wall mounted stadiometer RM-2000

Wall mounted stadiometer RM-2000 is designed to measure the growth of the patient in the standing position. Wall mounted stadiometer consists of vertical rack that attaches to the wall at a fixed height by means of two supporting arms. On the rack the level is movably mounted to measure growth. As standard, measuring scale of stadiometer starts from one meter. For childcare facilities stadiometer is equipped with additional scale up to one meter. For this purpose you must inform the manager when ordering.

Overall dimensions, mm: (l*d*h) - 150*130*1660



Stadiometer for children RD



Stadiometer for children RD-1 is used in children offices to measure the growth of babies. It is the housing made of laminated chipboard in which a movable stop is installed. On the side wall of stadiometer there is a fixed ruler to measure growth. The simplicity of design and ease of use allow the use of stadiometer in all children hospitals.

Overall dimensions, mm: (l*d*h) - 800*460*95

One-section panel screen for offices and hospital wards SHP-1



Panel screen SHP-1 is widely used in small medical offices and beauty parlors, where you need to separate a small workspace up to 750mm. Panel screen consists of one section, mounted on plastic wheels.

Overall dimensions, mm: (l*d*h) - 740*520*1810

Double-section panel screen SHP-2



Hospital ward panel screen SHP-2 is used to differentiate work zones up to 1.5 m, while its compact design allows installation of sections at any angle to each other. Two sections of the panel screen are connected together by metal hinges and mounted on a plastic wheels.

Overall dimensions, mm: (l*d*h) - 1480*520*1810

Triple-section panel screen SHP-3



Hospital ward panel screen SHP-3 is the optimal solution for the allocation of working areas in medium and large medical and cosmetic rooms. Panel screen SHP-3 consists of three sections interconnected by metal hinges and mounted on plastic wheels. The design allows installation of sections at any angle to each other.

Overall dimensions, mm: (l*d*h) - 2220*520*1810

TRIPODS

Stationary tripod for continuous infusions SHDV

Stationary tripod for continuous infusions SHDV is designed for mounting and fixing containers for the transfusion of drugs and disposable systems. The frame of tripod is made of metal profile and painted with white powder paint. Basket for infusion solutions consists of two bottle holders and two hangers for intravenous infusion systems. Basket moves along the outer part of aluminum tube. A tripod is mounted on a stationary crossbar. The design of the tripod has no protruding or sharp parts; it provides injury prevention during operation.

Overall dimensions, mm: (l*d*h) - 630*630*1800



Mobile tripod for continuous infusions SHDV-P

Mobile tripod for continuous infusions SHDV-P is designed for mounting and fixing containers for the transfusion of drugs and disposable systems. The frame of tripod is made of metal profile and painted with white powder paint. Basket for infusion solutions consists of two bottle holders and two hangers for intravenous infusion systems. Basket moves along the outer part of aluminum tube. A tripod is mounted on a crossbar with four wheels. The design of the tripod has no protruding or sharp parts; it provides injury prevention during operation.

Overall dimensions, mm: (l*d*h) - 630*630*1900



Tripod for continuous infusions SHDV-E

Tripod for continuous infusions SHDV-E (euro) is designed for mounting and fixing containers for the transfusion of drugs and disposable systems. The frame of tripod is made of metal profile and painted with white powder paint. Basket for infusion solutions consists of two hooks for intravenous infusion systems and two independent hangers for bottles with infusion solutions. Basket is regulated by the telescopic mechanism. A tripod is mounted on a crossbar with three wheels. The design of the tripod has no protruding or sharp parts; it provides injury prevention during operation.

Overall dimensions, mm: (l*d*h) - 630*630*1200-2000



Universal tripod for continuous infusions SHDV-U

Universal tripod for continuous infusions SHDV-U is designed for mounting and fixing containers for the transfusion of drugs and disposable systems. The frame of tripod is made of metal profile and painted with white powder paint. Basket for infusion solutions consists of two bottle holders and two hangers for intravenous infusion systems. Basket is not height adjustable. A tripod is mounted on a stationary crossbar.

Overall dimensions, mm: (l*d*h) - 480*480*1820



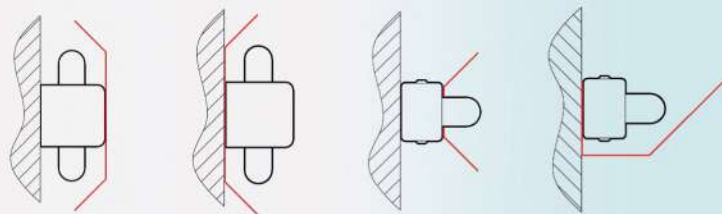
Mobile tripod for the irradiator SHOB

Mobile tripod for the irradiator SHOB is designed for installation and fixing of bactericidal irradiator OSN-35M, OBN-75M и OBN-150MP. The frame of tripod is made of metal profile and painted with white powder paint. It is mounted on four wheels.

Overall dimensions, mm: (l*d*h) - 550*590*1170



Screens to the bactericidal irradiators



The company offers a variety of metallic screens for bactericidal irradiators allowing to perform sterilization of premises in the presence of people and to protect the wall from impact of ultraviolet light on the surface.

Folding tripod for continuous infusions SHDV-S

Folding tripod for continuous infusions SHDV-S is designed to provide convenience of accident-assistant squad work or other emergency services at carrying out of medicines transfusion. The frame of the tripod has a telescopic lift basket consisting of two hooks for intravenous infusion systems and two independent hangers for bottles with the infusion solution. In the basis of the tripod is a foldable star base with three rubber supports.

Overall dimensions, mm: (l*d*h) - 750*650*1490-1690
Dimensions in the folded state, mm: 460*70*100



Stainless container for X-ray film processing BR-1



Mobile tripod for recirculator is designed for installation of Aereks-standard 15Br and 30Br. Mobile construction allows carry out sequential processing of the rooms. A tripod is made of painted metal profile and is delivered unassembled.

Tripod for SHDV-S in the folded state



BAGS

Bag SUM



Bag-kit for nurse (medical assistant) SUM is designed to equip medical personnel outside the hospital. The bag is designed to provide first aid at home. Bag has a semi-rigid construction, consists of two parts. On the back wall of the bag there is a pocket for supporting documents. On the front wall of the bag there is a large functional pocket. The bag has a reliable zipper that opens along the perimeter into two different departments. The main handle is made of plastic, comfortable and durable. The bag has shoulder strap with cover.

Overall dimensions, mm: (l*d*h) - 350*170*250

Bag SHP-01



Portable bag-refrigerator SHP-01 is designed to maintain an optimum the temperature at transportation of containers with serums, vaccines, donated blood and other immunobiological preparations. We offer SHP-01 for 4 liters.

Overall dimensions, mm: (l*d*h) - 280*210*180.

Bag SUL



Bag-kit for doctor SUL is designed to equip doctors and nursing staff outside the hospital, carry and use of medical subjects, instruments and tools. Bag is of the rigid structure. On the inner walls pockets are located to accommodate medicines, for surgical instruments and medical materials. Additionally, inside the bag there is a soft hanging pocket closed with a "lightning" lock. Doctor bag has three external volumetric pockets, on the back wall there is a zippered pocket for documents. The trapezoidal shape of the bag provides a convenient access to the content. For carrying bag in hands, on top of the valve cover plastic handle is provided. Valve cover is locked from above by means of two rim locks.

Overall dimensions, mm: (l*d*h) - 450*220*310

Bag SUSL



Bag-kit for family doctor SUSL is designed to equip home practice physicians and nursing staff outside the hospital for carrying and usage of drugs, dressing materials, medical items, instruments and tools. Bag is of the rigid structure. On the inner walls pockets are located to accommodate medicines, for surgical instruments and medical materials. Additionally, inside the bag there is a soft hanging pocket closed with a "lightning" lock. Doctor bag has three external volumetric pockets, on the back wall there is a zippered pocket for documents. The trapezoidal shape of the bag provides a convenient access to the content. For carrying bag in hands, on top of the valve cover plastic handle is provided. Valve cover is locked from above by means of two rim locks.

Overall dimensions, mm: (l*d*h) - 360*190*29

Bag SUT



Bag-kit therapist handbag SUT is designed to equip physicians and nursing staff outside the hospital for carrying and usage of drugs, dressing materials, medical items, instruments and tools. Therapist handbag is of the rigid structure. On the back wall of the handbag pockets for documents are located. There are external side pockets. Inside, on the walls of the handbag, there are mesh pockets for placing medicines and medical materials. The handbag opens from the top, providing convenient access to the content. For carrying the handbag in hands on top of the valve cover a plastic handle is provided. Valve cover is locked from above by means of two rim locks. There is also a comfortable shoulder strap. Used in the construction of the handbag cushioning materials protect the inside content from the blows.

Overall dimensions, mm: (l*d*h) - 340*190*220

Bag SUSHD

Bag-kit for emergency doctor SUSHD is designed for transportation and use of drugs, dressing materials, medical items, instruments and tools. Bag is of the rigid structure, consisting of housing and two replaceable inserts (plates). On the inserts (plates) pockets and sockets are located (case for storage and transportation of ampoules with medications) for placing medicines and medical materials. Additionally, inside the bag there is soft case for surgical instruments and units with a transparent top surface, closed with a "lightning" lock. The front wall of bag-case leans back, opening easy access to content. For carrying bag in hands, there are two

Overall dimensions, mm: (l*d*h) - 380*215*240



Handbag for ambulance UMSP-01



Aluminum handbag for ambulances is designed for transportation, carrying and storing of specially selected set of instruments, dressings and medical supplies needed for emergency medical assistance. Traveling bag is a lightweight box-type structure made of aluminum alloy with internal baffles and hinged top and front cover. The top cover is fixed with two tension locks. On the cover there is a pull-out handle for carrying. The case can be equipped with various inserts, case for storage and transportation of ampoules with medications and attachments according to the customer request, depending on the particular application of the case (kit of line ambulance crew physician, resuscitation kit, paramedic set, and so on). In a typical version of the delivery it is recommended in the left compartment of the case to lay the dressing, in the middle section - syringes, needles, systems, to the right compartment - an apparatus for pressure changes. Under cover - gloves, catheters and needles for deflation.

Overall dimensions, mm: (l*d*h) - 450*220*300

Case for storage and transportation of ampoules with medications AM-100



Universal case is designed for carrying and storing ampoules of various capacities. It has 100 nests. (10 nests for 10 ml ampoules, 26 nests for 5 ml ampoules, 64 nests for 2 ml and 1 ml ampoules). The case is made of waterproof fabric and is made in form of pad.

Overall dimensions, mm: (l*d*h) - 215*155*75

Backpack for rescue officers and field hospitals



Bag-kit backpack SUR is designed to equip doctors and medical personnel as a part of emergency rescue formations of civil defense and the emergency situations ministry. Backpack is targeted to carry and store medicines, dressing materials, medical items and tools ready to use under field conditions. Backpack is a semi-rigid construction. The presence of the shoulder, waist and shoulder straps allows you to carry it behind your back for long distances.

Backpack using "lightning" fastener reveals completely, offering free access to health care property, which is located in the pockets and blocks, located on the inner surfaces of the walls. Blocks are made in the form of soft cases with a transparent top cover, closed by "lightning" fastener. On the wall of the backpack, blocks are held by a textile "contact" fastener. On the front wall of the backpack there is a large pocket for bandaging materials. On the rear wall of the backpack by means of a textile "contact" fastener a soft waterproof heat insulation mat is attached, which can be used as bedding.

Overall dimensions, mm: (l*d*h) - 370x250x470

Resuscitation bag SUR-03



Resuscitation bag-kit SUR-03 is designed for compilation, packing, storage and transportation of resuscitation sets of various configurations. Placement of the content: in departments of the bag, in special inserts for infusion solutions and consumables. All bag parts, including bottom and top cover, are made using thick layer of polyvinyl chloride foam that protects the inner content from the blows. The bag is resistant in operation; it is designed for a long service life. On the top cover a separate mesh pocket on perimeter of the entire lid is placed. All zippers are broad, robust, with metal locks. For greater convenience the bag has a shoulder strap with cover and two handles on the sides. Inside the bag there are 3 delimiters, which are attached to the walls of bag with "velcro fastening" and divide it into sections. Delimiters can be optionally removed. The universality of bag allows use it for equipment of ambulance teams, disaster medicine, military and emergency medicine, mobile rescue formations, outpatient medicine institutions.

Overall dimensions, mm: (l*d*h) - 650*350*300

Electric water distiller DE-4M

Distiller DE-4M is designed for the production of distilled water in medical institutions and laboratories. Performance of the device is 4 l/h. The device consists of a water distiller and electrical board. The work is based on the condensation of the thoroughly separated steam. Tap water enters the evaporator and is heated by heating elements to boiling. Thus formed steam going through a series of separators, falls on the walls of the condenser, which is cooled from the outside with tap water and condensing it flows out in the form of distilled water. For the manufacture of structural elements of the distiller stainless pabular steel is used, that does not react with water oxidation. To prevent burnout of heating coils at falling of water level in the distiller the float switch is provided, which turns off the power of heating coils while reducing a level below the critical value. Water distiller is convenient and reliable in operation.

Supply voltage - 220V
Power consumption - 3.0 + -10% kW
Cold water consumption - 100 l/h
Overall dimensions, mm: (l*d*h) - 330*290*630



Electric water distiller DE-10M

Distiller DE -10M is designed for the production of distilled water in medical institutions and laboratories. Performance of the device is 10 l/h. The device consists of a water distiller and electrical board. The work is based on the condensation of the thoroughly separated steam. Tap water enters the evaporator and is heated by heating elements to boiling. Thus formed steam going through a series of separators, falls on the walls of the condenser, which is cooled from the outside with tap water and condensing it flows out in the form of distilled water. For the manufacture of structural elements of the distiller stainless pabular steel is used, that does not react with water oxidation. To prevent burnout of heating coils at falling of water level in the distiller the float switch is provided, which turns off the power of heating coils while reducing a level below the critical value. Water distiller is convenient and reliable in operation.

Supply voltage - 380V
Power consumption - 7.5+-10% kW
Cold water consumption - 200 l/h
Overall dimensions, mm: (l*d*h) - 330*290*850



Heating elements for distillers, autoclaves and dry-air sterilizers



Electric water distiller DE-25M

Distiller DE -25 is designed for the production of distilled water in medical institutions and laboratories. Performance of the device is 25 l/h. The device consists of a water distiller and electrical board. The work is based on the condensation of the thoroughly separated steam. Tap water enters the evaporator and is heated by heating elements to boiling. Thus formed steam going through a series of separators, falls on the walls of the condenser, which is cooled from the outside with tap water and condensing it flows out in the form of distilled water. For the manufacture of structural elements of the distiller stainless pabular steel is used, that does not react with water oxidation. To prevent burnout of heating coils at falling of water level in the distiller the float switch is provided, which turns off the power of heating coils while reducing a level below the critical value. Water distiller is convenient and reliable in operation.

Supply voltage - 380V

Power consumption - 18.0+-10% kW

Cold water consumption - 315 l/h

Overall dimensions, mm: (l*d*h) - 330*290*1050



Electrode water distiller A DE -60, A DE -90, A DE -120

Electric water distillers of ADE series are designed to produce distilled water for household, technical and medical purposes in large quantities. For water heating in the construction are used stainless steel electrodes that allow reaching the heating and evaporation of water of large volumes. It is widely used in the perfume industry. It can also be used in various other industries and the national economy. Power consumption is up to the ADE-60 40kW, ADE-90 55kW and ADE-120 75kW. Cold water consumption for cooling of condensate is 500, 650 and 1000 liters per hour, respectively.

Technical characteristics of ADE-90:

Supply voltage - 380V

Power consumption - 55.0+-10% kW

Cold water consumption - 650 l/h

Overall dimensions, mm: (l*d*h) - 600*600*1805



Stainless container for X-ray film processing BR-1



Container BR-1 (thermostat and wash tank) is designed to process X-ray films of all used formats in radiographic practice enshrined in frames. It is used in photo laboratories of X-ray departments in medical institutions. The inner part of the container is made of stainless steel. In the upper part there are compartments for developing and fixing the radiographs made of plastic.

Power consumption - 2 kW

Overall dimensions, mm: (l*d*h) - 750*600*870



X-RAY film drying cabinet SHSR-1

Cabinet SHSR-1 is used for drying the X-ray film after its photochemical treatment. Drying is carried out by blowing warm air into the chamber of the cabinet. Due to the low noise fans the cabinet does not create noise in the darkroom. The cabinet consists of the working chamber with a fan and two retractable shelves for x-ray films. In the door the glass is installed to monitor the drying process and a thermometer. The cabinet is equipped with an automatic temperature controller which maintains a certain temperature necessary for drying the film. The drying time

Power consumption - 1.4 kW

Overall dimensions, mm: (l*d*h) - 665*465*1660

Low-actinic lamp house FN-4M



Low-actinic lamp house FN-4M is intended for illumination of workplaces in the processing of X-ray films in X-ray rooms of health facilities. The uniqueness of the lantern is that lighting created by it allows you to work with films of any sensitivity. In processing of photographic materials the distance to the lantern is not limited. The durability of the lamp is determined by the absence of light filters exposed to the rapid aging.

Overall dimensions, mm: (l*d*h) - 355*320*255-345

X-ray view box NT-48M



X-ray view box NT-48M is designed for viewing of dry and wet radiographs in transmitted light. The frame of X-ray view box is made of stainless steel and is painted with powder coating. To fix the images, in the sides of the screen are installed fixing rollers. The product can be placed on a wall or flat surface.

Power consumption, no more than - 100 V

Overall dimensions, mm: (l*d*h) - 535*100*420

X-ray view box NT-86M



X-ray view box NT-86M is designed for viewing of dry and wet radiographs in transmitted light. The frame of X-ray view box is made of stainless steel and is painted with powder coating. To fix the images, in the sides of the screen are installed fixing rollers. The product can be placed on a wall or flat surface.

Power consumption, no more than - 200 V

Overall dimensions, mm: (l*d*h) - 800*100*525

Five-section surgical table SOP



Field surgical table is designed for surgical operations. It is used for indoor field premises. The table consists of the main frame with two supports, head, middle, and two foot sections with mattresses and such removable devices as: bracket for hanging of panel screens, straps to secure the patient's hands and body, adjustable leg holders, a table for hand with a pillow, head support and forehead board installed on the vessels holder thread.

Angles of inclination:

- Head section: up - 30 degrees, down - 60 degrees.
- Central section: up - 30 degrees.
- Foot section: down - 70 degrees.

Dimensions of packing box: 1094 x 695 x 305 mm

Mass of the table with devices - 46 kg (in the packing box - 80kg)

Overall dimensions, mm: (l*d*h) -

2200*2310*580-1600*840-1760



Folding manipulation table MS.SM-3M



Folding manipulation table is designed to accommodate and transport resuscitation and procedural tools, medicines and materials. A table consists of folding frames, two folding shelves and a drawer. It is installed for four roller supports, two of which have brakes, and also has clamps that rigidly fastened a collapsible design of a table in the operating position.

Overall dimensions, mm: (l*d*h) - 610*530*950

Dimensions of a table in the folded state, mm:

(l*d*h) - 930*580*310



Folding instrument Table MS.SPr-01M



A table is designed to accommodate medical equipment, instruments, tools, medicines and materials. It consists of three frames and rotary shelves. Table is made of steel, it is powder coated. An allowable load per shelf is up to ten kilograms. Adjustable feet, applied to product, allow a stable position when installing equipment on uneven surfaces.

Overall dimensions, mm: (l*d*h) - 610*530*950

Dimensions of a table in the folded state, mm:

(l*d*h) - 930*580*140





Folding field bed MS.KP-02M

The bed is designed for general patient care and for their rehabilitation. It consists of a foldable two-part bed with frame structure made of sheet steel and three supports made of steel profile. Mattress is available by special order and is not included in the price of product. The product has features of stationary equipment and privileges of foldable, i.e. convenient for storage and transportation with minimal deployment time (less than two minutes without the use of tools).

Overall dimensions, mm: (l*d*h) - 2000*780*1000

Dimensions of a bad in the folded state, mm: (l*d*h) - 2000*780*210



Functional folding bed MS.KF-01M

The bed is designed for general patient care and for their rehabilitation. The construction consists of a three-section bed with adjustable sections (the angle of elevation of the back section - from 0 to 45 degrees, the angle of elevation of foot section - from 0 to 30 degrees), folding backrests and two folding supports on wheels with braking devices. In the frame there are places for the tripod for injections. Additionally, it may be equipped with a tripod for infusions, foldable stand for urinal and the mattress.

Overall dimensions, mm: (l*d*h) - 2020*780*840

Dimensions of a bad in the folded state, mm: (l*d*h) - 1000*805*340



Transversely folding stretchers NS-1

Stretchers are designed for transportation of patients in hospitals, trauma centers and emergency medicine. Stretchers frame is made of high-strength steel. Stretchers are equipped with four legs; cloth is from special dense fabric. It makes them lightweight, compact, comfortable and safe to use.

Overall dimensions, mm: (l*d*h) - 2070*550*220

Dimensions of the stretchers in the folded state, mm: (l*d*h) - 1035*550*280

SURGICAL TABLES

The table is designed to conduct operations in general surgery, and - when using additional specialized devices - in orthopedics, proctology, urology, obstetrics and gynecology, ophthalmology, otolaryngology, neurosurgery, and other types of surgical intervention. Surgical table consists of two parts: the upper - mechanical and the bed (SDA-5 stationary, SDA-5m hydraulic and SDA-5э electrohydraulic). The top panel of the table consists of several sections: for the head, for the back (part for the back, part for the seat, kidney roller), for feet and stretch section. Change of the position of the section for the back is made by rotation the handle. The inclination angle adjustment of the table panel is carried out by using the handle and a switch. Special tool kit (available by special order and is not included in the price of the product) is made of stainless steel, ductile iron and aluminum. The housing of the base is made of high strength composite material. Removable mattresses are made according to the latest technology. Panel of an x-ray-table is transparent. The base provides stability of the table and does not encumber the operating team. Removable column shells provide an easy access to the operating mechanisms for the prophylaxis. Also by special request, all external metal parts of the table (including the supporting frame panel, side slide rails to accommodate attachments, exterior base sheathing, fastening elements and metalware) can be made of chrome-nickel stainless steel combined with high-quality plastic and mattresses materials that provide an easy access to the drive mechanism for prophylaxis. приспособлений, наружные обшивки основания, крепежные элементы и метизы) могут быть изготовлены из нержавеющей хромоникелевой стали в сочетании с высококачественными пластмассой и материалами матрасов.

- Dimensions of the table top, 2100 x 480 mm
- The height of the table top from the floor, 850 mm (SOU-5), 1000-800 mm (for tables SOU-5m and SOU-5e)
- The angle of inclination of the table top + - 25°, left, right up to 18°
- The angle of inclination of the head section +30°, -90°
- The angle of inclination of the back section to + 75°, - 10°
- Moving the waist section (kidney roller), 120 mm
- The angle of inclination of the feet section -90°
- The maximum permissible load, 160 kg

Overall dimensions, mm: (l*d*h) - 2100*600*800-1040

Surgical table SOU-5, SOU-5m, SOU-5e



Double-section surgical table SOU-2



Surgical table with hydraulic drive SOU-2 is designed to conduct operations in general surgery. It is also widely used when conducting operations in ophthalmology. Adjustment of table height is carried out hydraulically driven. Structural elements of the table are made of stainless steel sheet. The working surface consists of two parts - the bed and the head restraint. Head restraint adjustment on a discharge angle to the surface of the bed is carried out manually. Along the table working surface on the sides fitments are mounted for the placement of additional specialized devices.

**Overall dimensions, mm: (l*d*h) -
2100*600*1150**

Phlebology table

Phlebology table is designed for use in phlebology in the treatment of varicosity. The table consists of a metal base and a soft bed. Adjusting the angle of inclination is carried out by an electric motor. In the lower part of the bed the shelf is installed for fixing the patient in a horizontal state. In the lateral parts handrails are installed.

Overall dimensions, mm: (l*d*h)
2100*600*1150



Veterinary dressing-table SVP

The table is designed to carry out dressings in animals. The table is a metal welded construction made of unified elements. The upper surface of the table is made of stainless steel resistant to environmental effect. On the lateral parts of the product devices for tying animals are placed. For the stability of the table is equipped with adjustable legs.

Overall dimensions, mm: (l*d*h) - 1700*700*900



Veterinary surgical table SOV

The table is designed for small and intracavitary operations at medium and large animals. The table is a structure made of unified elements. It has a movable bed, four adjustable sections (the angle of elevation from 0 to 75 degrees). Adjustment of table height is carried out manually. Sections for pressing animals have hand clamps and fittings for tying animals. Also the table can be equipped with an infusion stand.

Overall dimensions, mm: (l*d*h) - 1355*860*536-750



STAINLESS STEEL FURNITURE

We offer manufacturing of standard products completely made out of stainless steel. Medical furniture made of stainless steel differs in high quality and reliability. Wide range of products (instrumental tables, stainless carrier for basin, veterinary surgical table, anesthesiologist tables, tripods for medicine droppers, carriers for dressing boxes, basin, buckets, and many other things) allows you to select equipment necessary exactly for your institution.

Table SIS-N



SI-5-n



SP-n



SMS-n



SN-n



SDR-n



TKSK-n



Tripods



Trolley MPT



For equipment of laboratories, we offer a range of laboratory cabinets made of stainless steel. Cabinets are designed for storage of various drugs and tools in laboratories and medical facilities. Products are collapsible structure made of stainless steel metal panels and glass, placed in the door sections. Inside the cabinets metal shelves are installed. The doors are closed on the lock. We offer various modifications of cabinets - with the bottom safe and with no safe, univalve and bivalve.



SHL-2-n



SHL -1-n



SHL -1c-n



LABORATORY TABLES

Laboratory table SL-001



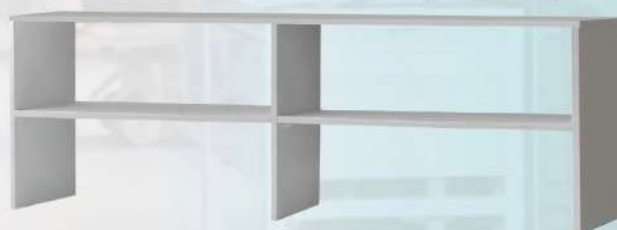
Wall mounted laboratory table is designed for chemical and physical analysis in the laboratories of industrial enterprises, medical institutions and research institutes. We offer a variety of table configurations. The right mix of construction can be agreed when ordering.

Overall dimensions as an assembly, mm: (l*d*h) - 1520*580*1280
Worktop height, mm: - 850

Table without optional equipment SL-03



Upper superstructure SL-02



File cabinets SL-04



The table can be equipped with various options of file cabinets - with door and drawers.



*Laboratory table with
locking file cabinet and
upper superstructure
SL-001.02.04*



*Laboratory table with locking
file cabinet SL-001.03*



*Laboratory table with
drawers SL-001.03.04*



*Laboratory table with
drawers and upper
superstructure SL-001.02.03*



*Laboratory table with locking file
cabinet and drawers SL-001.03.04*



*Laboratory table with upper
superstructure SL-001.02*

Car gurney TNSC-01



Car gurney TNS-01 is designed for transportation of patients in ambulances and hospital premises. Gurney is equipped with a convenient folding mechanism of legs when loaded into an ambulance. In order to facilitate loading, gurney is equipped with two pairs of wheels under the head section. Lowering of gurney legs occurs automatically when you pull it out of the ambulance. Large diameter wheels provide stability and maneuverability. Gurney from both sides has restrictive arcs, which can be lowered. The frame is made of high strength aluminum alloy. Gurney is very convenient for transportation of patients in the limited spaces, in the passenger elevators. Gurney can be equipped with a loading device at choice.

Receiving and loading device UP-02M



It is used for loading (unloading) and fixing of gurneys TNS-01 model and stretchers VAW-01RP model in a car. The receiving and loading device is installed and fixed on the floor of the car. Receiving device consists of a base, a platform with borders to set the trolley (stretchers), leaning back brackets and panels on which the trolley (stretcher) is loaded onto the platform. In the transport position slipway and clamp are raised to a vertical position and are fixed by a locking latch. In a headboard of the receiving device is a pedal, that allows manage transverse movement of the device. Receiving device is mounted in accordance with the installation drawings to the floor of the car.

Overall dimensions, mm: (l*d*h) - 2040*670*180

Receiving and loading device UP-01M

Receiving and loading device UP-01M with a cross ± 125 mm, angular 16 degrees and the longitudinal displacements of amortized stainless steel panel (angular from the electric drive 12V). Receiving device is used for loading and unloading, fixing, angular and transversal movements in the intensive care transport of C type (with a high roof). The device provides smoothness of loading and unloading of trolley in the vehicle, regardless of the height of the cabin floor. The angular displacement is carried out by electric drive controlled with a remote control, and the transverse displacement is carried out by means of a hand lever located at the bottom of the device. The usage of the device provides convenient access to the patient from three sides, facilitates the work of the staff on rendering reanimation help to the patient, and allows hold activities of aggressive medical therapy in the car.

Overall dimensions, mm: (l*d*h) - 2000*590*250



Rigid stretchers NDZ-01

Rigid stretchers VAW-01 are made of steel (on request can be made of aluminum alloy) and have a convenient rigid panel. Stretchers are fitted with two front wheels with a diameter of 100 mm.

Overall dimensions, mm: (l*d*h) - 2185*600*270

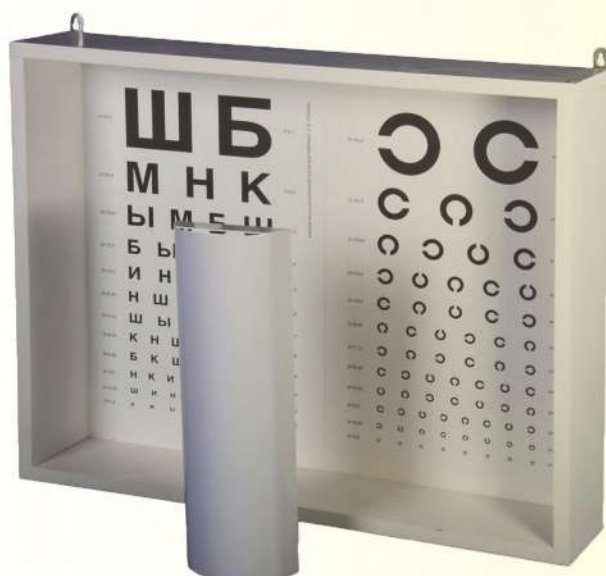


Rigid stretchers NDZ-01RP

Rigid stretchers NDZ-01RP are made of steel (on request can be made of aluminum alloy) and have a rigid panel consisting of two sections (angle of inclination of the head one is manually adjustable), stretchers are equipped with four wheels with a diameter of 100mm.

Overall dimensions, mm: (l*d*h) - 2100*540*140

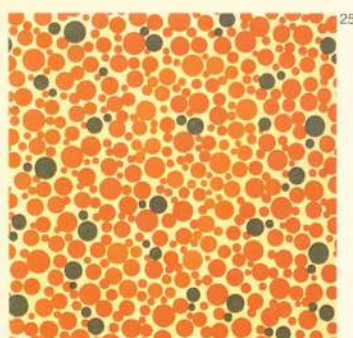




The illuminator of tables for sight check (Rotta apparatus) AR-1M

The illuminator of tables AR-1M is designed to test visual acuity in clinics, hospitals, specialized health care and ophthalmological offices. The apparatus has a central position of the reflector; on the main wall of the housing tables of test marks are fixed. Included with the apparatus are tables for testing of visual acuity - Sivtsev tables. The main operating position of tables with a lighter is wall mounted.

Overall dimensions, mm: (l*d*h) - 620*345*525



Rabkin table

Rabkin table for research of color perception is intended for testing and studying of color vision in the patient, as well as to determine various forms and degrees of color pathology. It contains two sets of tables - the main group of Rabkin tables from 1 to 27, which is required in the differential diagnosis of forms and degrees of color vision disorders, and a control group of Rabkin tables (from 28 to 48) - the last group is used in the refinement of diagnosis in cases of aggravation (simulation and dissimulation).



Table for vision testing

Sivtsev and Rabkin tables are a standard set of printed characters to determine the visual acuity of a person. Tables are printed in typographical way on anti-glare paper.

Bactericidal irradiators for water disinfection OBV-75m, OBV-300



P1 - working pressure, atm. (max); P2 - test maximum pressure, atm;
D - diameter of the thread of connection, inch; W - power consumption, V (max);
N - the number of lamps; Пp1 - productivity, tap water, m3/h; Пp2 - productivity, distilled water, m3/h.

OTHERS

Irradiator OBV is designed for water disinfection either separately or in conjunction with other types of water treatment. The irradiator is used for water treatment in the production of medicines, saline solutions, as well as therapeutic and table waters. Irradiators have low pressure bactericidal lamps that emit ultraviolet with a wavelength of 253,7nm, close to the maximum of bactericidal action of radiant energy that suppresses the activity of microorganisms in an aqueous medium and on the surfaces of the reactor.

	P1	P2	D	W	N	Пp1	Пp2
OBV-75m	2,5	3,8	3/4	100	1	2,2	3,4
OBV-75mu	6,0	7,2	3/4	100	1	2,2	3,4
OBV-300m	2,5	3,8	2	400	4	9,1	11,4
OBV-300mu	6,0	7,2	2	400	4	9,1	11,4

Paraffin heater PR

Paraffin heater PR is designed to work with ozokerite, paraffin, wax, therapeutic mud (pack including mud heater) and similar materials with the required pH and salt content. The device can be used in homes, hospitals and clinics. At the request of the customer paraffin heater for 2L, 6L, 12L, 24L can produce. The device is designed to operate at a temperature of + 10°C to + 35°C and relative humidity up to 80%.

Overall dimensions, mm: (l*d*h) - 290*570*510
Power: on 6L - 1000 VA, on 12L - 1500 VA



Gynecological single-reflector lamp SG-1

The lamp is designed for examinations in gynecological offices and during various gynecological and surgical operations. In the inspection lamp as the light source halogen lamp is used that helps to get well focused beam of light in the right place. Convenient control system helps to fix the lamp in the necessary position. A tripod on the platform provides maximum stability during manipulations with the luminaire.

Overall dimensions, mm: (l*d*h) - 300*280*1260



Radiation dosimeter ERA-01m

Dosimeter-radiometer is designed to measure equivalent dose (ED) and equivalent dose rate (EDR) of gamma radiation, as well as evaluation of surface contamination by beta radionuclides. Dosimeter is used for domestic purposes: for the control of radiation cleanness of dwellings apartments, buildings, objects, clothes, vehicles, surface of soil in home gardens; for evaluation of radioactive contamination of wild berries and mushrooms, as well as a visual aid for schools.

Overall dimensions, mm: (l*d*h) - 150*50*22



AIR STERILIZERS

AIR STERILIZERS GP-20, GP- 40, GP-80

Air sterilizer is designed for sterilization and disinfection of surgical instruments, heat-resistant syringes and needles, and glassware and for other medical facilities. The sterilizer has nonvolatile memory for data storage of 3 sterilization modes that can easily be changed. The sterilizer has dual protection from emergency situations. In case of shifting from prescribed modes there will be a signal, in case of emergency overtemperature there will be deenergization.



STERILIZER GP-20

Chamber volume, L – 20
 Dimensions, mm: (l*d*h) – 220*300*300
 Voltage, V – 220
 Overall dimensions, mm: (l*d*h) – 550*420*440
 Weight, kg – 20

STERILIZER GP-40

Chamber volume, L – 40
 Dimensions mm: (l*d*h) – 285*470*300
 Voltage, V – 220
 Overall dimensions, mm: (l*d*h) – 580*595*445
 Weight, kg – 40



STERILIZER GP-80

Chamber volume, L – 80
 Dimensions, mm: (l*d*h) – 320*570*420
 Voltage, V – 220
 Overall dimensions, mm: (l*d*h) – 580*595*445
 Weight, kg – 60



STEAM STERILIZER GK-100

Steam semi-automatic sterilizer with vacuum drying is cost-effective, simple and easy in use, it is environmental friendly. The sterilizer is used in medical institutions. It is intended for pressurized water-saturated steam sterilization of medical application devices made of metal, glass, rubber, ligature suture material and textile, steam action on which does not affect their functional properties and for sterilization of solutions corked in glass bottles of rated capacity of 450 cm³ max. The sterilizer is used in patient care and other medical institutions.

Volume of chamber, dm³ - 100;

Overall Dimensions , mm: (l*d*h) –1170+50x604+50x1465+50;

Weight, kg, max. – 230.

Advantages:

- Cost-effective, simple and easy in use;
- Panels, lid, steam jacket and main units and are made of high-alloy stainless steel
- The chamber is cylindrical-shaped and in horizontal position;
- Built-in steam generator;
- Semi-automatic control;
- Heating time is not exceeding 30 min.;
- Preliminary air evacuation from the chamber is made by gravity blowing;
- Bacterial filter to clean air supplying to the ster. chamber at the stage of pressure equalizing;
- Service life is 10 years.

SUPPLIED EQUIPMENT

We not only produce, we offer the best equipment from around the world.

As a major importer, the group of companies ZAVET performs a comprehensive approach to the formation of the assortment, which now includes: laboratory equipment, medical equipment, support equipment, allowing equip any department of modern medical institution. Manufacturing firms, with which we cooperate, hold leading positions in the global market of medical equipment.

Always low prices!

We offer only the highest quality medical equipment at affordable prices, thereby helping health care organizations improve the quality of services to a new level with minimal financial outlay.

Always impeccable quality!

No matter what product you purchase, whether it's an autoclave or a microscope, you can be completely confident in the quality and reliability of the equipment. It should also be noted that for the entire range of our products have a warranty service that is performed by qualified personnel in our certified service centers.

Always responsiveness and professional approach!

We appreciate your time! Due to the fact that almost the entire range of medical equipment and furniture is presented at our warehouses, we perform purchase orders in the shortest time.

With us it is convenient and maximally profitable!

Highly qualified staff, our own warehouses, transport service, service of maintenance service, and modern informational and technical base of the Group of companies ZAVET allow to meet the needs of our customers in a better way.





PACTO TRADE INDUSTRIAL GROUP S.L.

C/Mare de Deu de Nuria 10, 3-1
Sant Joan Despi 08970
Barcelona
Spain

www.pactogroup.com
pactotradeindustrialgroup@gmail.com

tel. +34 932 206 246
mob. +34 603 198 119